



2024 SEASON
**PENINSULA
 PLAYERS**
at The Theatre in a Garden

AMERICA'S OLDEST PROFESSIONAL RESIDENT SUMMER THEATRE

Our 89th Year

JUNE 18 through JULY 7

**I OUGHT
 TO BE IN
 PICTURES**

by Neil Simon
 A comedy about finding family

AUGUST 21 through SEPTEMBER 1

**Mary's
 Wedding**

By Stephen Massicotte
 An unforgettable love story

JULY 10 through JULY 28

**The Angel
 Next Door**

by Paul Slade Smith
 Adapted from *Play at the Castle* by Ferenc Molnár
 A non-stop rollercoaster of laughs

SEPTEMBER 4 through OCTOBER 20

**The
 Stranger**

by Agatha Christie
 An intimate psychological thriller

JULY 31 through AUGUST 18

**MILLION
 DOLLAR
 QUARTET**

ELVIS PRESLEY
 CARL PERKINS

JERRY LEE LEWIS
 JOHNNY CASH

Book by Colin Escott and Floyd Mutrux
 An electrifying musical of rock 'n' roll history

**Where the Sun Sets, the Curtain Rises
 & the Stars Shine**

(920) 868-3287
www.peninsulaplayers.com



OUTSTANDING ARTISTS SINCE 1969
Painting | Sculpture | Glass | Wood | Clay | Jewelry



Just up the road from this wonderful theater is an award-winning gallery filled with original artwork from over 150 artists in a beautifully restored fruit barn and a peaceful sculpture garden. Enjoy the show at Peninsula Players and stop in for a visit the next time you're in the neighborhood!



Join us for our 56th season | Open 10-5 Daily
Shop online anytime at EdgewoodOrchard.com
4140 Peninsula Players Road, Fish Creek, WI 54212
EdgewoodOrchard.com | 920.868.3579



Welcome to
Peninsula Players Theatre!

Dear friends,

On behalf of the Board of Directors and the Peninsula Players Theatre community, it is my honor and pleasure to welcome you to our 89th season. Whether this is your first visit or an established tradition, it promises to be a delightful experience. We find ourselves in a magnificent place to enjoy outstanding professional theater on the shores of Green Bay, with spectacular sunsets, lush gardens, meandering paths through the old growth woods, and a world class theater.

I couldn't be more proud of our Artistic and Managing Directors, Linda Fortunato and Brian Kelsey, for collaborating to create this most incredible season of theater. With a mix of comedy, music, love, and mystery, there's something for everyone to enjoy. I look forward to laughing, crying, and jumping out of my seat with you!

Regarding our beloved campus, we're thrilled to announce that we've officially closed our capital campaign for the construction of two new dormitories for our staff and interns. While construction was complete in time for the start of last year's season, we still faced the task of paying for these much needed capital improvements. Between the generous contributions of our supporters and state grants, we were able to close our Act II housing campaign this past winter. We can't thank our donors and supporters enough for making this vision a reality. With your help, we are able to attract the best designers, staff, and interns to Peninsula Players Theatre, where they can now rest their heads in comfortable, modern accommodations. A heartfelt thanks to The Boldt Company, as well, who partnered with us and guided us through the construction process.

As we look ahead to the 9th decade of Peninsula Players Theatre's existence, know that our staff and board of directors are working diligently to maintain and improve upon the tradition we've all loved for so long. We could not do this without you, our donors, patrons, show sponsors, playbill advertisers, and volunteers, and we thank you for the love you have shown us past, present and into the future.

Please enjoy the show!

Sara Glenn

Sara Glenn
Board President



BOARD OF DIRECTORS

Sara Glenn, <i>President</i>	<i>Directors</i>		
Tom Birmingham, <i>Vice President</i>	Sarah Bonovich	Mike Fordney	Peggy Reineck
Bill Higley, <i>Treasurer</i>	Dave Borghesi	Mary Greisen	Greg Wait
Barbara Simpson	Julia Chomeau	Jill Herlache	Jerry Zaug
Fuhrmann, <i>Secretary</i>	Jackie Danis	Jim Maronek	



table of contents

Welcome to Peninsula Players Theatre's 89th season.

This season I am pleased to share five dynamic and varied stories that all delve into different types of human connection. We will explore the connection of family, of work and artistic partners, of connection through music, through love, and through adventure and peril. In a time where we are so often inundated by stories and experiences of division, I invite you to join us in celebrating the joy of connection.


There is also something new within these pages that we are excited to share. For the first time in our history, we have gathered information for the full season into one playbill. Whether you are with us for just one performance or multiple times throughout the season, you are now able to learn about all of the productions and the wonderful people that bring them to life.

Producing a season of five plays is an exciting undertaking that requires the efforts of many. Looking through this playbill will allow you to see the people that make this all possible and the scope of what we do over the course of the 18-week performance season. You can learn about the individual shows and playwrights, as well as the artists, staff, and interns that make up our company. You can also see the invaluable connections with our incredible Board of Directors, donors, sponsors, National Advisory Council, community, and advertising partners who support us throughout the season and beyond.

I am so proud of and impressed by our dedicated company, who share their time and talents to achieve all of this. On behalf of all of them and myself, thank you for joining us at our home by the bay and for making us a part of your day and your lives. We hope you will continue to join us - and connect with us - long into the future.

Linda Fortunato

Linda Fortunato
Artistic Director



PENINSULA PLAYERS
at The Theatre in a Garden

NATIONAL ADVISORY

NEED UPDATED COPY

Te...	...	Thatcher
Barbara Simp...	...	John "JW" Walker
Katherine S...	Todd Schmidt	Pamela Gaye Walker
Bill Hartman	Eric Simonson	Francesca Zambello

Company Members

Aja Alcazar, Actor.....	page 15	Rae Lake, Lighting Designer.....	page 42
Katharine Baumann, Box Office Manager.....	page 85	Rachel Lambert, Costume Designer.....	page 42
Audra Baakari Boyle, Business Manager.....	page 41	Anni Lampert, Cook.....	page 78
J Branson, Scenic Designer.....	page 42	Deb Lampert, Head Chef.....	page 78
Jake Busse, Actor.....	page 54	Sam Linda, Actor.....	page 54
Trey Brazeal, Lighting Designer.....	page 62	Garrett Lutz, Actor.....	page 23
Janyce Caraballo, Actor.....	page 59	Morgan Laszlo, Scenic Intern.....	page 34
Christopher Chase Carter, Director.....	page 51	Michelle Lilly, Scenic Designer.....	page 46
McKinley Carter, Actor.....	page 27	Michaela Lochen, Scenic Designer.....	page 51
Garrett Conard, Technical Director.....	page 81	Kimberly Ann McCann, Stage Manager.....	page 31
Paul Cook, Production Manager.....	page 23	Jack Magaw, Scenic Designer.....	page 58
Joe Court, Sound Designer.....	page 52	Eion Meldrum, Actor.....	page 54
Victoria Deiorio, Sound Designer.....	page 62	Yvonne Miranda, Costume Designer.....	page 62
Andrés Enriquez, Actor.....	page 17	Michael Mitchell, Carpenter.....	page 91
Daniel Etti-Williams, Sound Designer.....	page 43	Emily Nicholas, Stage Management Intern.....	page 34
Linda Fortunato, Artistic Director.....	page 9	Caleb Perez, Assistant Box Office Manager.....	page 85
Sean Fortunato, Actor.....	page 19	Timothy Peters, Lighting and Sound Intern.....	page 34
Kiera Fromm, Director.....	page 58	Wilhelm Peters, Stage Manager.....	page 37
Erin Noel Grennan, Actor.....	page 21	Sarah Coakley Price.....	page 27
Jordan Golding, Actor.....	page 25	Brandon Reed, Sound Engineer.....	page 52
Madelaine Foster, Prop Shop Supervisor.....	page 81	Guy Rhodes, Lighting Designer.....	page 52
Georgia Fried, Costume Shop Supervisor.....	page 83	Bonnie Ruble, Asst. Prop Shop Supervisor.....	page 89
Kellyn Gagner, Asst. Costume Shop Supervisor.....	page 83	Malcolm Ruhl, Music Director.....	page 51
Jazmin Havens, Scenic Intern.....	page 34	Joshua Schmidt, Sound Designer.....	page 46
Kat Hasanov, Scenic Artist.....	page 43	Eric Smith, Landscape Design/Grounds Manager.....	page 78
Ben Heppner, Actor.....	page 54	Thompson Scribner, Administrative Intern.....	page 34
Jessie Howe, Scenic Artist.....	page 47	Emm Socey, Props Intern.....	page 34
Ora Jones, Actor.....	page 47	Becca Stockhaus, Asst. Technical Director.....	page 89
Trenton Jones, Asst. Scenic Designer.....	page 63	Noelle Stollmack, Lighting Designer.....	page 58
Elizabeth Jackson, Cook.....	page 78	Danielle Szmanda, Development Director.....	page 39
Melanie Keller, Director.....	page 42	Gabriella Tzougros, Administrative Intern.....	page 34
Brian Kelsey, Managing Director.....	page 8	Zoe Valitchka, Costume Intern.....	page 34
Maggie Kettering, Director.....	page 62	Alden Vasquez, Stage Manager.....	page 37
Kaitlin Kitzmiller, Stage Manager.....	page 31	Kaela A.C. Wilson, Stage Management Intern.....	page 34
Kärin Simonson Kopischke, Costume Designer.....	page 46	Elliot White, Scenic Intern.....	page 34
Robert Kuhn, Costume Designer.....	page 51	Stephen Roy White, Lighting Designer.....	page 46
Christopher Kriz, Sound Designer.....	page 58	Joshua Williams, Audio and Lighting Supervisor.....	page 87



Many members of the administration and production teams greet and assist patrons at each performance. Please thank all our company members for their efforts to bring you a memorable and engaging experience.

Peninsula Players Theatre's Mission ...

Peninsula Players Theatre is committed to preserving America's Oldest Professional Resident Summer Theatre in its unique setting on 16 forested acres along the shores of Green Bay. The theater's mission is to support, without reservation, the most exciting theater company possible; to preserve the Theatre in a Garden's natural beauty; to provide artists the freedom, tools, and facilities they require to entertain, uplift, and inform our audiences; to foster future generations of theater professionals through the internship program; and to maintain fiscal policies that insure the future security of the theater.

Values of Peninsula Players Theatre

We strive for excellence in all we do – endeavoring to present our patrons with the highest quality professional theater while ensuring their visit is as welcoming and positive as possible.

We celebrate equity, diversity, accessibility and inclusion. We value the right to be who you are and embrace differences, which makes us whole as a community. Diversity encompasses aesthetics, age, class, disability, ethnicity, gender, geography, economic status, faith, race, sexual orientation and varying points of view.

We aspire to foster a company that practices joy, humor, kindness, compassion, honesty, respect, dedication, inclusiveness, and love. One which also understands the value of a strong work ethic, ongoing professional development, as well as the value of being a member of a social and supportive campus community.

We commit ourselves to produce a wide variety of programming that remains faithful to the intentions of the theater's founders. In addition to providing the joy of entertainment for its own sake and bringing established stories to light, we also work to produce well-known stories and new works that take an artistic risk, reflect the complexity of our shared humanity, explore social commentary, feed the soul, foster civic dialogue and fuel the curiosity of our community at large.

We pledge to be a supportive and responsible member of the Door County community and an advocate for the larger arts community. We are determined to expand public awareness of the essential contributions the arts make to society as a whole.

We prioritize the health (mental & physical) and safety of our company members, donors, patrons and volunteers and dedicate ourselves to providing a safe and secure environment for all.

We believe in the intrinsic value of life-long learning which creates an environment of continued professional and personal growth.

We mentor the next generation of theater practitioners through our internship program, by way of advice, teaching, listening, example and help in making their way into the professional world, and through supporting secondary education in the arts through our scholarship program.

We cherish and value the tranquility and splendor of the forest and water which surrounds our artistic home and commit ourselves to environmental sustainability.

We revere the rich legacy of Peninsula Players Theatre and embrace the great responsibility of ensuring it remains a stable business by using sound financial practices and accountability that will protect the theater for future generations.

Recognition of Prior Stewardship

Peninsula Players Theatre would like to acknowledge that the land on which we gather was nurtured for thousands of years before our residence in 1937. These peoples include the former Wildwood Camp for Boys, the Potawatomi Nation and other influential peoples/nations, including the Huron, Menominee, Ojibwe, Ottawa, Petun, Sauk and the Winnebago (or Ho-Chunk).



BRIAN KELSEY

Managing Director

Celebrating his 17th season as Managing Director of Peninsula Players Theatre, Brian reflects on his extensive professional journey, which has taken him through various sectors across the United States and Europe. With expertise spanning operations, finance, marketing, and public relations, Brian serves as a versatile leader within the organization. Brian's dedication goes beyond his role at Peninsula Players Theatre. He previously held the position of president at the Peninsula Arts and Humanities Alliance and currently contributes as a member of the Marketing Committee of the Women's Fund of Door County. Moreover, he currently chairs the Wisconsin Arts Board and actively participates in state-level tourism initiatives, serving on both the Diversity, Equity, Accessibility, and Inclusion Committee and the Marketing Committee. His contributions play a vital role in advancing cultural and tourism endeavors statewide. As a journalism graduate from Marquette University, Brian takes pride in sharing his business acumen with his community, particularly acknowledging Peninsula Players Theatre for igniting his passion for the arts during his childhood. Brian's tenure epitomizes a harmonious blend of professional expertise, community engagement, and personal fulfillment. His unwavering dedication is evident in his efforts to enhance both the arts and tourism within his community and across the state.

Enjoy Your Visit to Peninsula Players

Restrooms. Restrooms are located north of the theater near the lower parking lot. As you exit the audience pavilion on the Beer Garden side, follow the footpath past the Canteen to the next building beyond. Follow the "star lights" for your respite.

Re-entry during a performance. If you must leave during the performance, please do so quietly through the nearest open house door. Re-entry, while the performance is in progress, is at the discretion of the House Manager.

Children. In general, we suggest ages eight and over attend due to attention span purposes. One or more of our shows have adult themes that may be inappropriate for young children. At Peninsula Players Theatre, we generally follow the 'school-age and up' rule. Everyone attending must purchase a seat. **Babes in arms** will not be allowed in the theater. For further information regarding the age-appropriateness of any of our shows, please contact the Box Office at (920) 868-3287 or visit the play pages at www.peninsulaplayers.com.



To purchase tickets for **wheelchair or limited mobility seating**, please phone our Box Office at (920) 868-3287. We are better able to handle special needs in person or over the phone.



Induction Loop Technology is available to guests with hearing devices containing a telecoil (T-Coil) on the theater's main floor, rows A through S. The loop will transmit sound directly to your hearing aid or cochlear implant while you are in the "loop."



Assisted listening devices are available at the Canteen for the hearing impaired. A driver's license or credit card is requested as a security deposit to use these devices.

Balcony Guests – If you are seated in the balcony, visit the Canteen for an assisted listening device. The balcony does not have hearing loop technology.



LINDA FORTUNATO

Artistic Director

Director – *The Angel Next Door*

This is Linda's third season as Peninsula Players Theatre's artistic director where her 20 seasons include acting in *Talley's Folly*, *The Importance of Being Earnest*, *Wait Until Dark*, *Noises Off*, *The Woman in Black*; directing *Dames at Sea*, *A Rock Sails By*, *The Rainmaker*, *Ghost the Musical*, *Lend Me a Tenor*, *And Then There Were None*, *The Fox On the Fairway*; and choreographing *Chicago*, *A Little Night Music* and *Cabaret*. Linda was previously the artistic director of Theatre at the Center in Munster, Indiana, where she directed *Cabaret*, *Big River*, *The Tin Woman*, *Steel Magnolias* and worked on a dozen other shows as director, choreographer or actor. Other credits include work with Marriott Theatre, Drury Lane Theatre, Chicago Shakespeare Theater, Writers Theatre, BoHo Theatre, Fulton Theatre, American Players Theatre, and teaching in the theatre departments of Loyola University and Columbia College Chicago. This holiday season, she will direct and choreograph *White Christmas* at Marriott Theatre.



The Luna Bar and Beer Garden are open 90-minutes before curtain and Saturdays after the show.

Listening Devices

With our induction loop technology, guests at Peninsula Players Theatre with hearing devices containing a telecoil (T-Coil) will have sound transmitted directly to their hearing aid or cochlear implant on the main floor.

Assisted listening devices are available in the Canteen for the hearing impaired who do not have access to T-Coil technology. A driver's license or credit card is required as a security deposit for the use of these devices.

Balcony Guests – If you are seated in the balcony, visit the Canteen located outside of the theater for an assisted listening device. The balcony does not have the loop system available.



HEARING LOOP INSTALLED
Switch hearing aid to T-coil
www.hearingloop.org

© Normal Association of the Deaf

50 Years!

Cheers to 50 Years!

Peninsula Players Theatre would like to thank and congratulate the Wisconsin Arts Board for its continued support and service!

Since 1973, the Wisconsin Arts Board, our state's arts agency, has been nurturing creativity, cultivating expression, promoting the arts, supporting the arts in education, stimulating community and economic development, and serving as a resource for people of every culture and heritage.

Investing in your community's imagination for 50 years.

www.artsboard.wisconsin.gov

WISCONSIN arts BOARD
Creativity. Culture. Community. Commerce.

Join Us for a Pre-Show Seminar!

The theater will host Pre-Show Seminars before select performances of the 2024 season. Audiences are invited to arrive early for special seminars on topics related to the shows.

Pre-Show Seminars begin at 6:30 p.m. inside of the theater.
General admission seating, no tickets necessary.

Tuesday, July 2, 2024 - Hosted by Neil Brookshire.
Wednesday, July 24, 2024 - Hosted by *The Angel Next Door* playwright Paul Slade Smith.
TBD - Hosted by Paul Sowinski
Thursday, August 29, 2024 - Hosted by Mauricio Kilwein Guevara
Friday, October 11, 2024 - Hosted by Dr. Christopher Chan

Join the Post-Show Discussions at Peninsula Players Theatre

The theater invites our audience to stay after certain performances in 2024 and participate in a conversation with our artists. Have a question about the performance? Or do you want to know how a bit of stage business was accomplished? Now is the chance to ask! Please check the centermost pages of this playbill for the pre-show seminar dates.

I Ought To Be In Pictures - ??? Date
The Angel Next Door - ??? Date
Million Dollar Quartet - ??? Date
Mary's Wedding - ??? Date
The Stranger - ??? Date

**DRIVEN BY
PURPOSE
BUILT ON
VALUES**

Helping shape Door County for over 30 years.



BOLDT



Harbor GUEST HOUSE

7 lovely apartments located right on the water,
open year around except the month of March

www.harborguesthouse.com

920-868-2284 • 888-868-2284

info@harborguesthouse.com

9484 Spruce St., Fish Creek, WI 54212



Thank You to Our Generous 2024 Show Sponsors!

I Ought to be in Pictures

Tony & Judy Licata

The Angel Next Door

Tim & Jackie Danis

Million Dollar Quartet

Alibi Marina & Harbor Guest House

Mary's Wedding

Door County Medical Center & Jean Kapolnek

The Stranger

Main Street Market, Barbara & Richard Board and Margaret & Dale West

*We would like to extend a special 'thank you' to Nicolet National Bank
for their continued support, season after season.*

For more information on show sponsorships, please contact Development Director Danielle Szmanda
at (920) 868-3287 or danielle@peninsulaplayers.com

Download My DCMC

Download on the App Store | GET IT ON Google Play



URGENT CARE

Keeping you on track.

Open 7am - 7pm, 365 days a year

**Door County
Medical Center**
IN PARTNERSHIP WITH HOSPITAL SISTERS HEALTH SYSTEM

Trusted team. Close to home.

Sturgeon Bay • 323 S. 18th Ave.
(920) 746-3800 • dcmcdical.org



DirectCare

*Walk in or reserve your spot online
for convenient same-day, in-person
care. DirectCare is for anyone over
12 months old.*

911 Green Bay Rd. • Sturgeon Bay

DirectCare



Scan to
learn more

It matters where you bank.

When you bank with Nicolet Bank you contribute to the local economy and quality of life in Door County. Working together, we can make our community the best it can be.

Proud to support the Peninsula Players.

Nicolet
NATIONAL BANK



Egg Harbor
NicoletBank.com | 920.868.3871
MEMBER FDIC

Connecting is in Your Nature

YOUR HELP MATTERS.

Protect Door County's wildlife, lands & waters.



Door County Land Trust

DoorCountyLandTrust.org • PO Box 65, Sturgeon Bay • (920) 746-1359

Frykman Studio Gallery



AJA ALCAZAR

Actor – *I Ought To Be In Pictures, The Angel Next Door, Million Dollar Quartet, The Stranger*

Aja (she/her) is a Los Angeles-based actor and musician and is so thrilled to join Peninsula Players Theatre this season! Chicago credits: *The Penelopiad* (Goodman Theatre); *Ring of Fire* (Drury Lane); *Cambodian Rock Band* (Victory Gardens); *Merrily We Roll Along* (Porchlight Music Theatre); *Aristophanesathon, Cinderella* (Hypocrites); *Hookman* (Steep Theatre); *Little Fish* (Kokandy Productions); and *The Wedding Singer* (Haven Theatre). Regional credits include *Cambodian Rock Band* (City Theatre, Merrimack Repertory); *Pirates of Penzance, HMS Pinafore* (Olney Theatre Center); *A Christmas Carol* (Milwaukee Repertory Theater); and *Where the Mountain Meets the Moon* (South Coast Repertory).

Supporting the arts in Door County

7770 Hwy 42 | (920) 868-2120 | www.doorcountygrocery.com

Bay Breeze
RESORT

Change your point of View

BayBreezeResort.com
920-854-9066 • Book Direct!

Winner of Good Morning America's Best Breakfast in America Challenge

Hearty breakfasts, sumptuous lunches, quiet candlelight dinners, and famous traditional Door County fish boils. Restaurant open to the public all year.

WhiteGull Inn

4225 Main Street • Fish Creek, WI 54212
800.624.1987 • 920.868.3517
innkeeper@whitegullinn.com
www.whitegullinn.com



attention to every detail

920.868.2828
TrueDoorCounty.com



ANDRÉS ENRIQUEZ

Actor – *The Angel Next Door, Million Dollar Quartet, The Stranger*

Andrés is honored to be making his Peninsula Players Theatre debut! He has lived in Chicago for 12 years and has been lucky enough to work for some incredible theaters during that time. Some more notable credits include *James and the Giant Peach, Big Fish* and *You're A Good Man Charlie Brown* (Marriott Theatre); *School of Rock* (Paramount Theatre); *Measure for Measure* (Chicago Shakespeare Theater); *Somewhere Over The Border* (Teatro Vista) and *A Gentleman's Guide to Love and Murder* (Porchlight Music Theatre). Regionally, his credits include *Comedy of Errors* (Orlando Shakes), *It Came From Outer Space* (TheatreSquared), *Much Ado About Nothing* (Montana Shakespeare in the Parks) and *Schoolhouse Rock Live* (Birmingham Children's Theatre). Andrés is a proud ensemble member/casting director of Lifeline Theatre in Chicago.



FRIDAY NIGHT FISH BOIL
SUNDAY BRUNCH
LUNCH & DINNER

CALL FOR RESERVATIONS
920.868.3888

6626 WI-42 • EGG HARBOR, WI 54209 • THELOGDEN.COM



Great Food & Drinks!
OPEN YEAR ROUND

COYOTE ROADHOUSE
BAILEYS HARBOR, WISCONSIN

OPEN EVERYDAY 11 AM
SERVING LUNCH & DINNER

www.coyote-roadhouse.com

3026 County E • Baileys Harbor • 920.839.9192

Ephraim Shores RESORT

~ Relaxed Lodging With a Harbor View ~

Ephraim Shores Welcomes Another Enjoyable Season of Fine Entertainment

~ www.ephraimshores.com ~

920.854.2371 • 10018 Water Street • P.O. Box 168 • Ephraim, 54211

Clay Bay Pottery

Come see us for our 48th year!

11650 Highway 42
Ellison Bay
Open 10-5
Wednesday - Saturday
920.854.5027
Facebook & Instagram

IN MEMORY OF
Edward "Ted" Laitner, board member 1994-2023



Last September, former Board President Jill Herlache presented Ted Laitner with a plaque honoring his nearly 30 years of service to the theater.

No matter where he lived, whether it was Detroit, Michigan, Waukesha or Door County, Wisconsin, Ted was known for his commitment, integrity, community service, generous spirit and dapper dress. He was born and raised in Detroit alongside his sister, Mary. Ted liked to say he graduated from the University of Michigan, received his Naval Commission, and married his high school sweetheart, Nancy, all on the same day. After his Navy service, which took him from San Francisco, California, to Korea, Nancy and Ted returned to Detroit, where he worked at Laitner Brush Company. They eventually moved to Waukesha, where they continued to ski and golf while raising their four daughters Barbara, Cheri, Laurie and Linda. In addition to working at Fleming Sales Company or Great Lake Sales and Marketing, Ted was a Rotary member, volunteered for the YMCA, hosted Girl Scout teas and often wrote letters to the editor supporting improvements and investments in the local educational system. Ted began a 25-year career selling real estate after he and Nancy "retired" to Door County, where he was also active on several boards and committees, including Peninsula State Golf Course, Church of the Atonement, St Luke's Episcopal Churches and our very own board of directors where his calm demeanor and leadership helped guide us through two capital campaigns to build this cherished theater and new housing for our company members. Nancy and Ted were blessed to spend nearly 70 beautiful years together before his death in September 2023.



SEAN FORTUNATO

Actor — I Ought To Be In Pictures, The Angel Next Door

Peninsula Players Theatre credits include *Bliithe Spirit*, *A Rock Sails By*, *The Rainmaker*, *Talley's Folly*, *Peter and the Starcatcher* (Black Stache), *Sunday in the Park with George* (George). Off-Broadway: *Rose Rage* at The Duke on 42nd. Regional: *Young Frankenstein* (Dr. Frankenstein) at Mercury Theater; *Damn Yankees* (Applegate) at Marriott Theatre; *Intimate Apparel* at Northlight Theatre; *Matilda* (Miss Trunchbull) at Drury Lane Theatre; *Twelfth Night* (Malvolio) at Writers Theatre; and work at Chicago Shakespeare Theater, Goodman Theatre, Court Theatre, Theatre at the Center, Timeline Theatre Company, Porchlight Music Theatre, Remy Bumpoo Theatre and The Old Globe Theatre. TV: *Antoon Dumini* in "Fargo" (FX), "Chicago Med," "Chicago Fire," "Chicago PD" (NBC). Film: "The Merry Gentleman" directed by Michael Keaton. Sean has received 10 Joseph Jefferson Award nominations and an After Dark Award.

Nightingale
 — Supper Club —

Serving Door County Families since 1913

Menu offers a wide selection of entrees including nightly specials

Bar offers great selection of craft beers, wine, & spirits
 Not a "club" that requires membership, so come on in and enjoy our cozy atmosphere and friendly waitstaff

Happy Hour M-F 4 PM to 6 PM **Dining Monday - Saturday 5 PM to 9 PM**
 (Hours may vary, please make a reservation)

☎ 920-743-5593 ✉ info@nightingalesupperclub.com
 📍 1541 Egg Harbor Road, Sturgeon Bay, WI 54235

Washington Island Ferry Line

Strong supporting cast.
 Dramatic scenery.

wisferry.com
800-223-2094

DESTINATION DOOR COUNTY

Embrace the Arts of Door County

Door County boasts a vibrant year-round arts scene filled with incredible live music and theatrical performances. We applaud the creative professionals who bring their work to life so all may enjoy their extraordinary gift of inspiration.

Learn more about the arts and culture in Door County.
DoorCounty.com

Country House Resort

Stay with us... You will always want to come back...

- 1,100' of private shoreline
- 27 wooded acres
- Walking distance to Sister Bay amenities
- Private water view balconies
- Welcoming adults & children 13 yrs+

Views... Space... Rest... Relaxation...

WWW.COUNTRYHouserESORT.COM • 2468 SUNNYSIDE RD • SISTER BAY • 920-854-4551

Best Vacation Location in Door County!

Homestead Suites

- Suites w/ fireplaces, whirlpools or rain showers
- Indoor/outdoor pools & whirlpools
- Seasonal packages / specials

920.868.3748 www.homesteadsuites.com 800.686.6621
4006 Hwy. 42 (Main St.) PO Box 730, Fish Creek, WI 54212



“Health Comes from Within”

- Holistic Family Health Care
- Cold Laser Therapy for Pain Syndromes
- Decompression Spinal Therapy • Foot Levelers Orthotics

Staudenmaier Chiropractic
Wellness Center

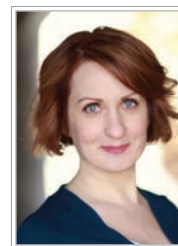
30 N. 18th Avenue, Suite 3
Sturgeon Bay, WI 54235
(920) 743-7255



www.BackToWellness.org

Like us on Search Staudenmaier Chiropractic Wellness Center of Sturgeon Bay

Sister Bay Bowl



ERIN NOEL GRENNAN

Actor – *I Ought To Be In Pictures*, *The Angel Next Door*

Erin returns for her eighth season at Peninsula Players Theatre, where credits include *A Real Lulu* (Broadway World Award), *Making God Laugh*, *The Game's Afoot* and *Sunday in the Park with George*. Regional: *Reckless*, *Incident At Our Lady Of Perpetual Help* (Cincinnati Playhouse in the Park); *The Outsider* (Paper Mill Playhouse); *Unnecessary Farce*, *Wit* (BoarsHead Theater); *Moon for the Misbegotten*, *Blithe Spirit*, *The Taming of the Shrew* (First Folio Theater); *A Christmas Carol* (Geva Theatre); *A Flea in Her Ear*, *The Foreigner*, *The Man Who Came To Dinner* (Drury Lane Theatre); and *The Angel Next Door* (Laguna Playhouse). International: Ireland's Gaiety Theatre. TV: “The Other Two,” “Dr. Death,” “Bull,” “Law & Order: SVU,” “Blue Bloods,” “FBI: Most Wanted,” “Chicago Med,” “Chicago Fire” and umpteen commercials. erinnoelgrennan.com

7537 Hwy 57 • Baileys Harbor, WI 54202
920-839-2211 barbara@anschutzplumbing.com

139 N 3rd Ave, Sturgeon Bay
(920) 743-0231

Hide Side Boutique

Papillon

- DAMEE
- TRIBAL
- ADORE
- BALI
- MICHAEL TYLER
- ETHYL
- PURE
- PURE ESSENCE
- MULTIPLES
- TRISHA TYLER
- ARTEX
- UBU

PROUDLY SELLING AMERICAN-MADE PRODUCTS!

hwy 42 & main street
downtown fish creek

(920) 868-2333
hideside.com
open daily year round!

FAMILY OWNED AND OPERATED SINCE 1974

LEATHER GOODS
FUNCTIONAL ART
HOME FURNISHINGS

BRIGHTON | TILLEY HATS
MINNETONKA | MEPHISTO
OSGOODE MARLEY

WILLIAM HENRY
CUSTOM, HANDMADE KNIVES

A FRIENDLY, MEMORABLE SHOPPING EXPERIENCE!

We've got you covered.

We listen. We observe. We serve.

We aim to make Door County a better place for all who live and visit here. We publish stories about the people and places that make our community special and the news that matters most in our lives, with a particular interest in people who are using their creativity and ingenuity to propel Door County forward.

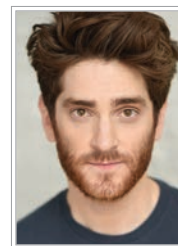
We love Door County, and our mission goes beyond telling stories. We are advocates for Door County as a place for people to live, to visit, and to thrive. Our community engagement goes well beyond our pages. We celebrate our community through our events, daily encounters, social media, podcasts, and video.

We record our time.

PENINSULA
pulse



920.839.2121 | doorcountypulse.com
8142 highway 57, baileys harbor | subscribe@doorcountypulse.com



GARRETT LUTZ

Actor – *The Angel Next Door, Million Dollar Quartet, The Stranger*

Garrett is making his Peninsula Players Theatre debut! Credits include *Damn Yankees, Spring Awakening, Newsies, Grease, Shrek the Musical, James and the Giant Peach* (Marriott Theatre); *The Music Man* (Goodman Theatre); *Cabaret* (Paramount Theatre); *Three Sisters* (Steppenwolf Theatre Company); *Macbeth, Twelfth Night, Madagascar* (Chicago Shakespeare Theater); *Tiger Style* (Writers Theatre); *Big River, Ghost the Musical* (Theatre at the Center); and *James and the Giant Peach, The Little Mermaid* (Drury Lane Theatre). Film and web credits include *Divergent* (Summit Entertainment), United Auto Insurance (Spokesman), Jimmy Johns (Principal), and "The Munch on Oregon" (The Onion). Storefront credits include *Urinetown, Dogfight* (BoHo Theatre), and *Heathers, The Full Monty* (Kokandy Productions, Non-Equity Joseph Jefferson Award nominee). Represented by Shirley Hamilton Inc.



PAUL COOK

Production Manager

Paul is delighted to return for his third season with Peninsula Players Theatre. A Chicago native, Paul has lived and worked in theatre all over the country and overseas. He received his BA in theatre and English from Marquette University (Milwaukee, Wisconsin) and his MFA in directing from the University of California, Irvine. As a production manager in Chicago, he has worked with Strawdog Theatre, Pride Arts, Windy City Playhouse and Timeline Theatre. In the off-season, he lives in Chicago with his husband, Wilhelm, and Pit Bull, Agatha Trunchbull (Aggie). Paul is passionate about equity in the arts and looks forward to another wonderful summer season in beautiful Door County.

DOOR COUNTY YMCA
SUPPORTING THE ARTS IN
DOOR COUNTY SINCE 1986

LET'S MAKE AN IMPACT TOGETHER
DOOR COUNTY YMCA • WWW.DOORCOUNTYYMCA.ORG

LOCAL AGENTS
LOCAL KNOWLEDGE
LOCAL EXPERIENCE

When it comes to
real estate in Door and
Kewaunee Counties,
it pays to work with
a member of the
Door County
Board of REALTORS®

TO FIND A
DCBR MEMBER,
SCAN HERE

EPHRAIM
AUTHENTIC DOOR COUNTY

www.ephraim-doorcounty.com | 920.854.4989 | vacation@ephraim-doorcounty.com

A Tranquil Country Bed & Breakfast set on 30 Private Acres

8 Magnificent Suites include:
*Double Whirlpool, Fireplace, Private Bath & Homemade Breakfast
 Heated Pool, Sauna, Hiking Trails & Colorful Gardens*

Chanticleer Guest House
 4072 Cherry Rd, Sturgeon Bay, WI 54235
 920-746-0334 ChanticleerGuestHouse.com

door county COFFEE

COFFEE • ESPRESSO • GIFTS • BAKERY • BREAKFAST • LUNCH
 920.743.8930 • doorcountycoffee.com • 5773 Highway 42, Carlsville



JORDAN GOLDING

Actor – Million Dollar Quartet, Mary’s Wedding

Jordan is thrilled to make his Peninsula Players Theatre debut. Credits include *The Band’s Visit* (Writers Theatre and TheatreSquared – regional premiere), *Once* (Writers Theatre), *Drunk Shakespeare Chicago* (The Lion Theatre), *Pump Boys and Dinettes* (Timberlake Playhouse), *The Merry Wives of Windsor* (Arc Theatre), *Eurydice* (Promethean Theatre Ensemble), *Light Up The Sky* (Citadel Theatre), and various productions at the Oberlin Summer Theater Festival, including *Barefoot in the Park*, *Macbeth*, *The Winter’s Tale*, *As You Like It*, *All’s Well That Ends Well*, *Inherit the Wind*, *Treasure Island*, *The Secret Garden* and *Come Back, Little Sheba*. He holds a BA in theater from Oberlin College and received classical training for a semester at the British American Drama Academy’s London Theatre Program (*Macbeth*, *Ovalhouse Theatre*).

Exceptional eyecare and eyewear for every generation.

165 N. 3rd Ave.
Sturgeon Bay
920.743.2020
www.dcea.com

DOOR COUNTY EYE ASSOCIATES

Kind Soul Yoga
DOOR COUNTY, WI

Top of the Hill Shops,
Fish Creek

Green Lake Festival of Music

A Place for All
JUNE-AUGUST 2024

Visit our website to learn more!

GreenLakeFestival.org
920-748-9398

Security Fence
A Tradition Of Excellence

Ornamental Steel & Aluminum *Vinyl*
 Chain Link *Full Color Chain Link*
 Gates * Gate Operators* * Railing*
 INSTALLED OR DO IT YOURSELF

Call for free estimate
(920) 757-7240
 www.securityfenceandsupply.com

OPEN DOOR PRIDE

Celebrating Diversity in Door County with Inclusion for All

- ✓ Pride Flag Initiative
- ✓ Community Events
- ✓ Sandy Brown Award
- ✓ What's My Pride
- ✓ Scholarship
- ✓ Donations

info@opendoorpride.org
opendoorpride.org

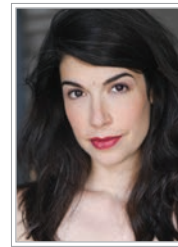
Annual Pride Festival Last Saturday in June

GOOD FOOD GREAT DRINKS BEST VIEWS FUN EVENTS

We won't blame you for *chewing the scenery* here.



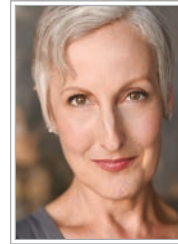
At the Landmark Resort | 7643 Hillside Rd, Egg Harbor, WI 54209
www.carringtondoorcounty.com | (920) 868-5162



SARAH COAKLEY PRICE

Actor – *The Stranger*

Sarah is thrilled to be making her Peninsula Players Theatre debut. Recent Chicago theatre credits include *Love Song* (Remy Bumpo Theatre Company); *Eurydice* (Writers Theatre); and *Dear Jack, Dear Louise* (Northlight Theatre). Sarah has also performed in shows at Goodman Theatre, Court Theatre, A Red Orchid Theatre, Steep Theatre, First Floor Theatre, Lifeline Theatre, Strawdog Theatre Company, The Hypocrites, and Sideshow Theatre Company, as well as regionally at Indiana Repertory Theatre and Boise Contemporary Theater. TV: "Chicago Fire" (NBC). Sarah graduated from The Theatre School at DePaul University, the Improv Training Program at iO and Second City's Conservatory. She is represented by Gray Talent Group. www.sarahcoakleyprice.com



MCKINLEY CARTER

Actor – *The Stranger*

McKinley is thrilled to return to the woods, where some favorites have included *Sunday in the Park with George*, *Into the Woods*, *A Little Night Music*, *The Taffetas*, *Over the River and Through the Woods* and *The Game's Afoot*. She makes Chicago home, most recently appearing in *Midnight in the Garden of Good and Evil* (Goodman Theatre), *Cinderella* (Drury Lane Theatre), *CLUE* (Mercury Theater Chicago), and *Spring Awakening* (Porchlight Music Theatre). Other Chicago credits include *Into the Woods* (Writers Theatre), *Fun Home* (Victory Gardens Theater), *The Merry Widow*, *Carousel* (Lyric Opera), *Macbeth*, *Road Show* (Chicago Shakespeare Theater), *The Book of Will*, *Title Of Show*, (Northlight Theatre), *James Joyce's The Dead*, *Cymbeline* and *Pericles* (Court Theatre) and *Winesburg, Ohio* (Steppenwolf Theatre Company).

One History...Three Ports of Call.

Jim Kress Maritime Lighthouse Tower at the Door County Maritime Museum
Sturgeon Bay

Cana Island Lighthouse
Baileys Harbor

Death's Door Maritime Museum
Gills Rock

DOOR COUNTY maritime museum

920.743.5958 | www.dcm.org | #dcmartime

neverland +co.
A FANTASTICAL CHILDREN'S CLOTHIER

WHERE YOUR STORY BEGINS.

Neverland+Co. carries an exquisitely curated collection of exclusive, quality children's clothing lines for newborn to teen, from party to play, and every adventure in between.

The Marketplace | 58 North 3rd Avenue, Sturgeon Bay | 920.724.1265

neverlandandco.com

Dromhaus Door County
Daydreams Properties



The Play's the Thing Winter Playing Reading Series

The Play's the Thing is part of our community outreach programming, presenting free professional play readings for the public on the first Mondays of February, March and April. The 2024 readings were directed by Artistic Director Linda Fortunato and performed at Björklunden in Baileys Harbor.



Pictured from left to right are actors La Shawn Banks, Patrick Michael Tierney and Karen Moeller.

We opened our 14th year of the three-part play series on February 5 with *The Nature Plays* by Patrick Gabridge, in coordination with Door County Reads' exploration of "Braiding Sweetgrass For Young Adults: Indigenous Wisdom, Scientific Knowledge and the Teaching of Plants" by Robin Wall Kimmerer, adapted by Monique Gray Smith and illustrated by Nicole Neidhardt. The reading featured Peninsula Players Theatre alumni Cassandra Bissell, Neil Brookshire, Christie Coran and Kevin Tre'Von Patterson.

The Play's the Thing continued on March 4, with Peter Quilter's *4000 Days*. Actors La Shawn Banks and Patrick Michael Tierney made their Peninsula Players Theatre debuts and were joined by Karen Moeller, who returned for her second season of The Play's The Thing. The final reading of the series on April 1 featured *The Last Train to Nibroc* by Arlene Hutton. Alumni actor Emiley Kiser was joined by Nick Trengove, who made his Peninsula Players Theatre debut.

The Play's the Thing continues to bring people together and maintain a human connection over the winter months in Door County. This winter program is funded in part by a grant from the Wisconsin Arts Board with funds from the State of Wisconsin and the National Endowment for the Arts, as well as generous grants from Door County Medical Center, Friends of Door County Libraries, The Shubert Foundation and operating funds of Peninsula Players Theatre. Thank you to the amazing staff at Björklunden for their hospitality and for hosting this series year after year!

Save the dates for our 2025 series:

Monday, February 3, 2025

Monday, March 3, 2025

Monday, April 7, 2025



Scan to Sign Up



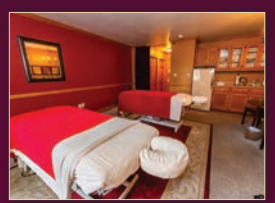
**Settlement
Courtyard Inn
& Lavender Spa**



Elegantly decorated rooms & suites with fireplace & kitchenette
Continental-Plus Breakfast
Fireside pub bar



Sunny & private outdoor pool
200-acre estate with trails leading into Fish Creek



Spa Packages & massage therapy available

www.settlementinn.com
920-868-3524

DOOR COUNTY WISCONSIN
**Lavender Spa
FISH CREEK**



920.868.9200
www.SettlementInn.com

Book by Appointment
9126 HWY. 42 at The Settlement Courtyard Inn
Massage Therapy ~ Organics ~ Sauna



KIMBERLY ANN McCANN

Stage Manager – I Ought To Be In Pictures, Million Dollar Quartet
Assistant Stage Manager – The Angel Next Door, Mary's Wedding

Kimberly is thrilled to return to Peninsula Players Theatre for her fourth season! Her regional credits include work with Goodman Theatre, Northlight Theatre, Milwaukee Repertory Theater, Skylight Music Theatre, Door Shakespeare, Tuacahn Center of the Arts and The Juilliard School. Her Broadway credits include *Curtains*. Her off-Broadway credits include *Bill W. and Dr. Bob*, *How to Save the World* and *John Ferguson*.



KAITLIN KITZMILLER

Stage Manager – The Angel Next Door, Mary's Wedding
Assistant Stage Manager – I Ought To Be In Pictures, Million Dollar Quartet

Kaitlin is still over the moon about returning to Peninsula Players Theatre for her sixth season. Regional theater credits include Goodman Theatre, Chicago Shakespeare Theater, Drury Lane Theatre, Milwaukee Repertory Theater, Resident Ensemble Players, Theatre SilCo and Nebraska Shakespeare. Love and be Loved.



Stone HEDGE GOLF and PUB

NINE-HOLE GOLF COURSE

Living on the hedge!

"The best place in Door County to WATCH SPORTS"

OUTDOOR PATIO overlooking the 9th Green

UPSCALE PUB FOOD

Friday Night Fish Fry • Full Bar with Craft Tap Beer & Foot Golf...fun for the whole family!

4320 County Road E — Egg Harbor, WI
Just a mile east of Highway 42 in Egg Harbor

STONEHEDGEGOLFANDPUB.COM

SCAN FOR MENU




THE CLEARING FOLK SCHOOL

YEAR-ROUND CLASSES IN THE ARTS, HUMANITIES & NATURAL SCIENCES



920-854-4088
WWW.THECLEARING.ORG

SEE

SILVER POPLAR STUDIOS GALLERY

SEE art by **JIM MARONEK**

June to mid-October
By appointment or destiny
1519 E.Door Bluff Road
Ellison Bay 854-2106
SEE what happens

GLIDDEN LODGE Beach Resort
Luxury waterfront condominiums



Private Beachfront
Each condominium suite features a view of a beautiful Lake Michigan sunrise!




gliddenlodge.com • 1-866-GLIDDEN

port side
BUILDERS, INC.

HOME CONSTRUCTION & REMODELING EXPERTS

We Make Building Enjoyable! (920) 746-1092 ❖ portsidebuilders.com

DENTISTRY BY DESIGN
SISTER BAY, WI

Comprehensive Dental Care in the Heart of Door County

Book your next appointment! 920.854.5200 DoorCountyDentistry.com

Refresh.

Refuel.

KWIK TRIP

Kwik REWARDS
ORDER AHEAD!
CURBSIDE • CARRYOUT • DELIVERY

We've got you covered!

WE MAKE, SHIP, AND SELL YOUR FAVORITE ESSENTIALS!

URGE! Big BUDDY DoriZ FATHOLE ACESSA MEALS KWIKERY Nature's Touch KITCHEN CRAVINGS MEALS KWIKERY GLAZERS KARUBA



Peninsula Players Theatre Scholarship

Peninsula Players Theatre is pleased to announce its 2024 Peninsula Players Theatre Scholarship recipients. The theater and its Board of Directors created this annual award to foster the career path and arts education of graduating high school seniors across Door County in the performing arts.

A \$500 scholarship was available to one student at each of the five Door County high schools for a total of \$2,500.

???????

Eligible applicants must plan to enroll as a full-time college student with a major or minor in arts management, music (performance or education), or theater (acting, theater studies, theater technology and design).

“The arts are such a critical part of a student’s overall education as well as continued personal development,” said Peninsula Players Managing Director Brian Kelsey. “It is with great pride that we reward and encourage the development of careers in the performing arts.”

Congratulations, Hunter Malvetz???



Do you recognize these faces?

They are Peninsula Players Theatre's hard working interns.

Participating in the theater's internship program this season are 10 students from theater programs across the country. These students and recent graduates have focused their studies on various theater disciplines. They are joining us to help create the dynamic performances you are about to experience. Please welcome and thank them for all of their hard work in helping to make each performance possible.

To learn more about our internship program, visit peninsulaplayers.com



JAZMIN HAVENS
Scenic Intern
Graduate of Avila University



MORGAN LASZLO
Scenic Intern
Senior at Columbia College Chicago



EMILY NICHOLAS
Stage Management Intern
Graduate of Millikin University



TIMOTHY PETERS
Lighting & Sound Intern
Graduate of Northern Illinois University



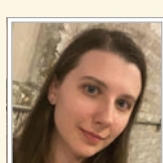
THOMPSON SCRIBNER
Administrative Intern
Graduate of Southern Utah University



EMM SOCEY
Props Intern
Graduate of Loyola University Chicago



GABRIELLA TZOUGROS
Administrative Intern
Graduate of Butler University



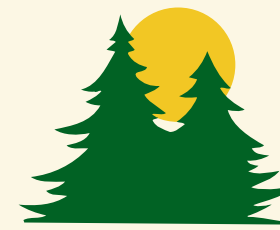
ZOE VALITCHKA
Costume Intern
Graduate of University of Wisconsin-Milwaukee



ELLIOT WHITE
Scenic Intern
Senior at University of Wisconsin-Milwaukee



KAELA A.C. WILSON
Stage Management Intern
Graduate of Old Dominion University



Internship Program, Est. 1935

These company members are an integral part of our theater, and they deserve a huge standing ovation.

The Peninsula Players Theatre's internship program is part of a tradition that runs as deep as the theater's roots. Since the theater launched its first season in 1935, interns, then called apprentices, have been given the opportunity to work side-by-side with professionals, learning the craft by participating in and observing the process. Participants spend 14 to 20 weeks working alongside the theater's professional actors, designers, managers and technicians. They witness all facets of theater in action, from backstage to the front office, creating a constant path of growth throughout the season, thus making our program unique among theater programs.

You may see them directing traffic in the parking lot, shifting scenery, delivering posters or operating the sound board during the shows. During the day, they assist in building the next show. Peninsula Players Theatre has always provided its interns with a weekly stipend and provided free room and board. For more information about our internship program, phone the Box Office at (920) 868-3287 or visit our website, www.peninsulaplayers.com, for an application to the 2025 season.

The Kathryn A. Doerr Intern Fund



Established in 2013 in memory of Kathryn A. Doerr (Katie), by her family, this fund provides critical support for Peninsula Players Theatre's intern program. During her lifetime, Katie was an advocate and supporter of art education, notably to art education in the Door County community she loved. Her legacy will provide a scholarship for Hannah Kwak during the theater's season this year.

If you are interested in supporting Peninsula Players Theatre's internship program please contact Danielle Szmanda at danielle@peninsulaplayers.com or (920) 868-3287.

GO TO A PACKERS GAME!

- Tickets - End Zone to 50 Yard
- Hotel Packages - Home & Road
- Luxurious Club & Private Suites
- Large Groups Welcome
- Tailgate Parties & Meet Players
- Also Buying Tickets

EventUSA
Unforgettable Fan Experiences

(920) 722-5377 | EventUSA.com



EAGLE HARBOR INN



Across from the bay, on Ephraim's historic main street, our Inn and whirlpool suites provide the perfect balance of charm and luxury resort amenities.

Book your stay at eagleharborinn.com

9914 Water Street • Ephraim, WI 54211 | 920.854.2121 @eagle_harbor_inn

Alexander



WILHELM PETERS

Stage Manager – *The Stranger*

Wilhelm, a Chicago-based stage manager, is making his Peninsula Players Theatre debut. Chicago credits include *The Last Pair of Earlies*, *How I Learned to Drive*, *A Doll's House*, *Nice Girl*, *The Undeniable Sound of Right Now* at Raven Theatre and *RENT* at Porchlight Music Theatre. Regional credits include Zachary Scott Theatre Center: *The Prom*, *A Christmas Carol*; *The Curious Incident of the Dog In the Night-Time* at Nashville Repertory Theatre; *The Royale*, *CLUE: On Stage*, *Sherwood: The Adventures of Robin Hood*, *Steel Magnolias*; and *Dear Jack*, *Dear Louise* at Creede Repertory Theatre.



ALDEN VASQUEZ

Assistant Stage Manager – *Mary's Wedding*

Alden returns for his 10th season having stage managed *Murder for Two*, *Always... Patsy Cline*, *God of Carnage*, *Lombardi*, *Miracle on South Division Street*, *Nonsense*, *Salvage*, *The 39 Steps* and *Almost, Maine*. He recently retired from the Goodman Theatre in Chicago as a stage manager for over 30 years, including 31 productions of *A Christmas Carol*. His Chicago credits include 14 productions at Steppenwolf Theatre Company, including the Broadway productions of *The Song of Jacob Zulu* and *The Rise and Fall of Little Voice*. He taught stage management at DePaul University for 25 years, is a 40-year member of the Actors' Equity Association and the recipient of the 2020 Del Hughes Lifetime Achievement Award from the Stage Manager's Association and an United States Air Force veteran.



Ace Hardware

Sturgeon Bay
920.743.4417

Sister Bay
920.854.2411

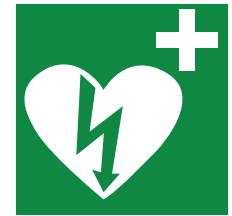
Little Chute
920.766.9096

DoorCountyRentalHouses.com

One to five bedroom vacation houses in Egg Harbor

DoorCountyRentalHouses@gmail.com
(920) 495-9995

EMERGENCY DEFIBRILLATOR



AED

An Automated External Defibrillator (AED) unit is in the back of audience pavilion for use in a health crisis and members of the Peninsula Players staff are CPR and AED certified. In case of an emergency, please remain calm and follow staff instructions.

Farm-to-Table Every Day in Ellison Bay

Brunch, Dinner & Outdoor Italian Wine Bar • 12029 WI-42, Ellison Bay, WI



BLUE BEAR

Start your day with the best brunch in Door County, serving unique and traditional dishes. Full bar serving craft cocktails, specialty coffee drinks, beer and sustainably sourced wines. *Amazing gluten-free, vegan, and keto options.*

Rez & Menu: BlueBearDC.com
920.854.3284



Authentic Southern Italian Cuisine.

Our menu offers fresh ingredients from local farmers. Salads, pastas, entrées, Neapolitan wood-fired pizza, desserts, cocktails, and Southern Italian wines. *Delicious gluten-free, vegan, and keto options.*

Rez & Menu: DellaPortaDC.com
920.633.4014

Welcome to our NEW outdoor Italian wine bar **La Piazza** COCKTAILS • SMALL PLATES
PIZZA • DESSERT | LaPiazzaDC.com



DANIELLE SZMANDA

Development Director

Danielle is thrilled to be celebrating her 14th season with Peninsula Players Theatre. She joined the company in 2011 as an administrative intern, returned in 2012 as the assistant box office manager and joined the full-time team in 2013. Prior to her full-time position, Danielle spent her early career in Chicago working in both administrative and production positions at various theaters throughout the city. She is a native of the Chicagoland area and a proud alum of St. Norbert College where she earned her

BA in theatre studies and business administration. Danielle is excited for another year of raising funds for this beloved theater!

A Door County Tradition Since 1906

Recognized by *Midwest Living* as a "Favorite Midwest Soda Fountain"

Open Daily 11am May-October

Great Food

Ice Cream Specialties

Home-Brewed Draft Root Beer

Outdoor Seating

Family Atmosphere

RESTAURANT
Wilson's
& ICE CREAM PARLOR

9990 Water Street • Ephraim
920-854-2041 • www.WilsonsIceCream.com



ACTORS' EQUITY ASSOCIATION 1913

Actors' Equity Association (AEA), founded in 1913, represents more than 45,000 actors and stage managers working in theatres across the U.S. Equity negotiates wages and working conditions, and provides benefits, including health and pension plans, for its members. Equity's mission is to advance, promote, and foster the art of live theatre as an essential component of our society. Whenever professional theatre exists, Equity exists.

JR Vacation Hones

Vanden Heuvel



AUDRA BAAKARI BOYLE

Business Manager

Audi (she/her) is delighted to be around patrons, artists, craftspeople and fellow company members at the theater she has called home for 30 seasons. She served as box office manager and public relations director for Peninsula Players Theatre before her current appointment in 1998. Audi was an assistant sales manager at The New Theatre Restaurant in Kansas City and business manager for the University of Arkansas-Fayetteville's theater department. She earned a BFA in technical theater, an MA in theater history/public relations and certificates in human resources and non-profit administration from the University of Wisconsin-Superior. In our off-season, she operates our Box Office via her home in Superior, Wisconsin, where she, her husband, Scott, and son, Conor, cater to the needs of Doaksie, their Staffie-Lab mix. Love and be loved.

Sophisticated Country Living
just outside of Sturgeon Bay



CHANTICLEER
CABINS

chanticleercabins.com
(920) 493-2395
4017 Cherry Road in Sturgeon Bay




Are you interested in volunteering?



Scan to sign-up for email notices about opportunities to volunteer.



MIDSÖMMAR
APOTHECARY

REMEDIES | ARTISAN FOOD & BEVERAGE
NATURAL BODY CARE | BOTANICAL SUNDRIES

HAND CRAFTED IN DOOR COUNTY



CRAFT
BITTERS & BOTANICALS

MIDSÖMMAR APOTHECARY

10668 NORTH BAYSHORE DRIVE, SISTER BAY

920.205.7949

MIDSOMMARHERBS.COM

Maintenance
Free Furniture



DOOR COUNTY
Nature Works
FINE HOME FURNISHINGS & ACCESSORIES
Since 2004

7798 HWY 42
EGG HARBOR
920 868 2651






MELANIE KELLER

Director - *I Ought To Be In Pictures*

Melanie is thrilled to return to Peninsula Players Theatre, where she directed *Trying and Murder For Two* and acted in *Salvage* and *A Fox on the Fairway*. For First Folio Theatre, she directed *Mary's Wedding*, *Silent Sky* and acted in over 10 productions. She directed the Joseph Jefferson (Jeff) Award-nominated *The Drowning Girls* for Signal Ensemble Theatre, where acting credits include *East of Berlin*, *The Russian Play* (Jeff Award - Best Actress), and *The Weir* (Jeff Award Nomination - Best Supporting Actress).

At Oak Park Festival Theatre, she directed *The Amish Project*, *Much Ado About Nothing* and performed as Lady Macbeth. Other directing credits include Northern Illinois University, Montana Shakespeare in the Parks and Chicago Dramatists. Additional acting work includes the Stratford Festival of Canada, Chicago Shakespeare Theater, Lakeside Shakespeare Theater, Michigan Shakespeare Festival, Goodman Theatre, Northlight Theatre and Waterfront Playhouse Theater of Key West.



J BRANSON

Scenic Designer - *I Ought To Be In Pictures*

For over 30 years, J has been a Chicago-based designer. National tour credits include *The Music Man*, *Beauty and the Beast* and *Brigadoon*. Past Peninsula Players Theatre productions include *Always...Patsy Cline*, *Nonsense* and *Salvage*. His recent regional work includes *Once*, *Two Gents* and *Ride the Cyclone*. Past regional work includes *Mary Poppins*, *Freaky Friday*, *Smokey Joe's Café*, *Jekyll and Hyde*, *Chess*, *The Wizard of Oz* (for which J received an After Dark award), *Children of Eden*, *Rags*, *Assassins*,

Guys and Dolls and *The Pajama Game*.

RACHEL LAMBERT

Costume Designer – *I Ought To Be In Pictures*

Rachel (she/her) is so happy to be back at Peninsula Players Theatre, where her credits include *The Mystery of Irma Vep*, *The Hollow*, *Lend Me a Tenor*, *Lord Arthur Saville's Crime*, *Miss Holmes*, *The Actuary* and *A Trick of the Light*. Other design credits include *Santaland Diaries* and *The King of Hell's Palace* (Goodman Theatre); *Twist Your Dickens* (The Second City); *Mothers and Sons* (Northlight Theatre); *Puff: Believe It Or Not, Henry IV, The Life of Galileo*, and the Joseph Jefferson Award-nominated *Travesties* and *Northanger Abbey* (Remy Bumpo Theatre); *Dying for It* and *Witch* (The Artistic Home), and shows with Buffalo Theatre Ensemble, The Gift, American Blues Theater, Eclipse Theatre Company, DePaul School of Music, Redtwist Theatre, The Factory Theater, BoHo Theatre and others. Regionally, she has designed for Montana Shakespeare in the Parks and the Texas Shakespeare Festival.



RAE LAKE

Lighting Designer – *I Ought To Be In Pictures*

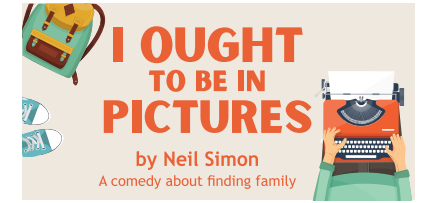
Rae is thrilled to return to Peninsula Players Theatre, where he interned in 2015! His regional design work includes *Into the Woods*, *A Midsummer Night's Dream* (University of North Carolina Greensboro); *Man of La Mancha*, *Once Upon a Mattress* (Weathervane Playhouse); Lookingglass Theatre Company Summerglass 2017, *Richard III*, *Dear Brutus*, *As You Like It* (Eclectic Full Contact Theatre); *Our Country's Good* (Three Crows Theatre) and *Golden Girls: Be Afraid!*, *Artificial Jungle*, *L'imitation of Life* (Hell in a Handbag Productions). He has also worked as an assistant lighting designer for *LIZZIE* (Actor's Express), *Yasmina's Necklace* (Goodman Theatre), and *It's a Wonderful Life* (American Blues Theater). He received his MFA in drama from UNC Greensboro School of Theatre.

Meet the Playwright ... NEIL SIMON



Photo by Martha Swope, courtesy of Billy Rose Theatre Division, The New York Public Library. (1992). Publicity photo of playwright Neil Simon (New York)

American author, playwright and screenwriter **Neil Simon** (1927-2018) is widely regarded as one of the most successful, prolific and performed playwrights in theater history. He started writing for radio and television with his brother, Danny, and worked alongside Carl Reiner and Mel Brooks on Sid Ceasar "Your Show of Show" and "Caeser Hour."



He wrote more than 30 plays during his career, the first of which was *Come Blow Your Horn* in 1961. Through the 1960s and into the 1980s, he adapted his plays or wrote more than 20 screenplays, including "The Out-of-Towners," "Murder by Death," and "The Goodbye Girl." Among his honors are four Academy Award nominations, four Emmy Award nominations, 17 Tony Award nominations, four Tony Awards, a Golden Globe Award, a Pulitzer Prize for *Lost in Yonkers* and the Mark Twain Prize for American Humor. He is the only playwright to have a New York theater named in his honor.



DANIEL ETTI-WILLIAMS

Sound Designer – *I Ought To Be In Pictures*

Daniel (they/them) is an up-and-coming sound designer and engineer from Dallas, Texas, who lives in Chicago. After studying acting at Oklahoma City University, they moved to Chicago to participate in Steppenwolf Theatre Company's Sound Apprenticeship Program. Since then, they have had the opportunity to work all over Chicago making theater, telling stories and expressing their passion through design. They are excited to be making their Peninsula Players Theatre debut! Regional theater credits include *The Antelope Party* and *The Brothers Size* (Oklahoma City Repertory Theater). Select Chicago design credits include *The Island* (Court Theatre), *Paris* (Steep Theatre), *Private Lives* (Raven Theatre), *Boulevard of Bold Dreams* (TimeLine Theatre Company), and *Is God Is* (A Red Orchid Theatre).



KAT HASANOV

Scenic Artist – *I Ought To Be In Pictures*

Kat Hasanov is a Chicago-based scenic artist, painter, production artist and designer. She is a scenic design graduate of The Theatre School at DePaul University, where she designed multiple shows, including *Squirrel Girl*. Kat has worked on various Chicago productions, including scenic paint charging *Spay* at Rivendell Theatre Ensemble. She currently works as an event production artist and hopes to continue using her theater training for art production and experiential design.

Our 89th Year
June 18 – July 7, 2024

Peninsula Players Theatre

LINDA FORTUNATO BRIAN KELSEY
Artistic Director Managing Director

Presents

I OUGHT TO BE IN PICTURES

By Neil Simon

Scenic Designer Costume Designer Lighting Designer
J Branson Rachel Lambert Rae Lake

Sound Designer Scenic Artist
Daniel Etti-Williams Katharine Hasanov

Stage Manager Assistant Stage Manager Production Manager
Kimberly McCann Kaitlin Kitzmiller Paul Cook

Directed by **Melanie Keller**

Generously Sponsored by Tony & Judy Licata



Peninsula Players Theatre would like to thank The Shubert Foundation, the Wisconsin Arts Board with funds from the State of Wisconsin, and the National Endowment for the Arts for their ongoing support.

I Ought To Be In Pictures is presented by arrangement with Concord Theatricals on behalf of Samuel French, Inc.
www.concordtheatricals.com



Assisted listening devices are available at the canteen.
Rows A to S of the theater are equipped with a loop induction system.

The Cast in order of appearance

LIBBY Aja Alcazar
STEFFY..... Erin Noel Grennan
HERB Sean Fortunato

West Hollywood, California – 1980

Act One

Scene 1: A small bungalow in West Hollywood
Scene 2: Later that evening.

Act Two

Scene 1: Two weeks later
Scene 2: Midnight
Scene 3: A little after 3 a.m.
Scene 4: Sunday morning 11 a.m., a few days later

There will be one 15-minute intermission.



PENINSULA PLAYERS THEATRE IS A PROFESSIONAL THEATER EMPLOYING MEMBERS OF THE ACTORS' EQUITY ASSOCIATION, THE UNION OF PROFESSIONAL ACTORS AND STAGE MANAGERS IN THE UNITED STATES.
The stage manager, assistant stage manager and all cast members of *I Ought To Be In Pictures* are members of the Actors' Equity Association.

Please Note!

Only water is allowed in the theater.
The use of recording instruments and cameras is strictly forbidden.
Please turn off or silence all mobile devices prior to the performance.



MICHELLE LILLY

Scenic Designer – *The Angel Next Door*

Michelle is a Chicago-based set designer whose work includes stage design, immersive experiences and game design. Michelle has collaborated with The Alinea Group, Paramount Theatre, Milwaukee Repertory Theater, Writers Theatre, Actors Theatre of Louisville, TimeLine Theatre Company, Stage 773, Jedlicka Performing Arts Center, The House Theatre of Chicago, New Leaf Theatre, TUTA, Lifeline Theatre, Springfield Muni and many others. She holds an MFA in stage design from Northwestern University and

a BA from Truman State University. www.michellelillydesigns.com



STEPHEN ROY WHITE

Lighting Designer – *The Angel Next Door*

Stephen is a faculty member at the University of Wisconsin-Milwaukee. Scenery or lighting design credits include *Arcadia* and *Silent Sky* at Burning Coal Theatre Company, *Trying*, *Murder for Two*, *Talley's Folly*, *Silent Sky*, *A Trick of the Light*, *Now and Then*, *The 39 Steps*, *Chapatti*, *Nonsense*, *The Tin Woman* and 58 other productions at Peninsula Players Theatre; *Zombies from the Beyond* at Skylight Music Theatre; *Chapatti*, *The Train Driver*, *The Detective's Wife* and *Lobby Hero* at Milwaukee Chamber Theatre; National

Veterans Theatre Festival at Milwaukee Repertory Theater; and *Othello Deployed*, *And Comes Safe Home* with Feast of Crispian – "Shakespeare With Veterans." Regional credits include Northlight Theatre, Drury Lane Theatre, Organic Theater Company, and a Joseph Jefferson Award nomination for *The Woman in Black*. StephenRoyWhite.com



KÄRIN SIMONSON KOPISCHKE

Costume Designer – *The Angel Next Door*, *Mary's Wedding*

Kärin is a proud union member, a Lawrence University professor and a sustainable clothing creator. Kärin celebrates the 30th anniversary of her first design for Peninsula Players Theatre. She designs costumes at top professional theaters and operas nationwide, including American Conservatory Theater, Long Wharf Theatre, Steppenwolf Theatre Company, Minnesota Opera, Chicago Shakespeare Theater, Boston Lyric Opera, Goodman Theatre, Milwaukee Repertory Theater, Third Avenue

PlayWorks and Skylight Music Theater. Kärin was recently honored by the Wisconsin Arts Board in their 50 Artists for 50 Years anniversary celebration. Kärin has won Chicago's Joseph Jefferson Award and the ariZoni. She was nominated for the Prague Quadrennial and won Nordstrom's Project N: The Fashion Challenge for her upcycled designs found on Etsy in her Gothic Flower shop. Her historical renderings are exhibited in Fish Creek, Sister Bay and Ephraim. karinkopischke.com



JOSHUA SCHMIDT

Composer/Sound Designer – *The Angel Next Door*

Josh (he/him/his) is delighted to make his debut at Peninsula Players Theatre. Recent credits include *Ma Rainey's Black Bottom* (American Players Theatre); *The Chosen* and *Much Ado About Nothing* (Milwaukee Repertory Theatre); *The Garbologists* (Northlight Theatre); *Bug* (Steppenwolf Theatre Company); *The Treasurer*, *The Mousetrap*, *Splash Hatch on the E Going Down* and *Kill-Move-Paradise* (Next Act Theatre); *Witch and Cost of Living* (Renaissance Theaterworks). Broadway credits include *Therese Raquin*, *House*

of Blue Leaves and *Brighton Beach Memoirs*. Josh has designed over 300 productions for companies, including Lincoln Center for the Performing Arts, Atlantic Theater Company, Roundabout Theatre Company (NYC), Steppenwolf Theatre Company, Writers Theatre (Chicago), Ford's Theatre (Washington, D.C.), and 21 Seasons at American Players Theatre. Film credits include songs and score for the upcoming release of "The End"

Meet the Playwright ... PAUL SLADE SMITH



Paul Slade Smith is an actor and playwright who lives in Brooklyn, New York, with his wife, actress Erin Noel Grennan. In 2013 and 2014, Paul performed at Peninsula Players Theatre in *The Nerd*, *Murder on the Nile*, *Once a Ponzi Time*, *Sunday in the Park with George*, as Amos (Mr. Cellophane) in Chicago and was William Gillette in *The Game's Afoot*. Paul received a Helpmann Award nomination for his performance as Willy



Wonka in the Australian premiere of the Broadway musical *Charlie And The Chocolate Factory*. Stateside, his acting credits include the original Broadway casts of *Charlie And The Chocolate Factory*, *Finding Neverland* and the 2018 Lincoln Center revival of *My Fair Lady*; US national tours of *Wicked* (Doctor Dillamond) *My Fair Lady* (Jaime), and *The Phantom Of The Opera*. His stage credits also include productions at American Repertory Theatre, Chicago Shakespeare Theater, The Goodman Theatre, Steppenwolf Theatre Company, Alabama Shakespeare Festival, Paper Mill Playhouse, Goodspeed Musicals, Geva Theatre Center, Asolo Repertory Theatre and Theatre Under the Stars in Houston, Texas. TV credits include NBC's "The Blacklist," and HBO's "The Other Two" and "The Gilded Age." Paul is the award-winning author of three plays: *Unnecessary Farce*, *The Outsider* (which made its world premiere at Peninsula Players Theatre with the working title *A Real Lulu*), and the play you are about to see, *The Angel Next Door*. For more information on these titles, visit www.paulsladesmith.com.



JESSIE HOWE

Scenic Artist – *The Angel Next Door*, *Million Dollar Quartet*, *Mary's Wedding*

Jessie is beyond excited to return to Peninsula Players Theatre for her fourth season with the company. Jessie was the scenic designer for the theater's production of *The Rainmaker* and the scenic artist for *Trying*, *Ken Ludwig's Baskerville: A Sherlock Holmes Mystery*, *Ripcord, I and You*, *Murder for Two*, *Talley's Folly* and *Romance in D*. Jessie has designed and painted for numerous Chicago-based companies, including First Folio

Theatre, Windy City Playhouse, Raven Theatre, Chicago Children's Theatre, Porchlight Music Theatre, The Den Theatre, TimeLine Theatre Company, Theater Wit, Shattered Globe Theatre and The Savoyaires. From 2015 until 2020, Jessie served as scenic charge artist for Theatre at the Center, where she also built and designed scenery. She holds a BA in theater design from Columbia College Chicago.



ORA JONES

Actor – *The Angel Next Door*

Ora made her Peninsula Players Theatre debut in the 2019 production of *George Washington's Teeth*. Her most recent Chicago stage role was Catherine Adams Green in *The Nacirema Society* for the Goodman Theatre in 2023. She has performed at Chicago Shakespeare Theater, Timeline Theatre, Writers Theatre, About Face Theatre, Court Theatre and Rivendell Theatre. She is also a member of the Steppenwolf Theatre Company Ensemble. Her Broadway roles include Madame de Volanges in *Les Liaisons*

Dangereuses and Mrs. Phelps in *Matilda the Musical*, both for Broadway and the first national tour. Some film and television work includes: "The Emperor of Ocean Park," "61st Street," "We Grown Now," "Somebody Somewhere," "Stronghold" and "Chicago Fire."

Our 89th Year
July 10 – July 28, 2024

Peninsula Players Theatre

LINDA FORTUNATO BRIAN KELSEY
Artistic Director Managing Director

Presents

THE ANGEL NEXT DOOR

By Paul Slade Smith

Adapted from Ferenc Molnar's *Play at the Castle*

Scenic Designer Costume Designer Lighting Designer
Michelle Lilly Kärin Simonson Kopischke Stephen Roy White

Composer/Sound Designer Scenic Artist
Josh Schmidt Jessie Howe

Stage Manager Assistant Stage Manager Production Manager
Kaitlin Kitzmiller Kimberly McCann Paul Cook

Directed by **Linda Fortunato**

Generously Sponsored by **Tim & Jackie Danis**



Peninsula Players Theatre would like to thank The Shubert Foundation, the Wisconsin Arts Board with funds from the State of Wisconsin, and the National Endowment for the Arts for their ongoing support.

The Angel Next Door is presented by special arrangements with the playwright.

The Angel Next Door was originally produced at North Coast Repertory, Solana Beach, California, David Ellenstein, Artistic Director.



Assisted listening devices are available at the canteen.
Rows A to S of the theater are equipped with a loop induction system.

The Cast in order of appearance

CHARLOTTE SANDERS..... Ora Jones
OLIVER ADAMS Garrett Lutz
ARTHUR SANDERS Sean Fortunato
OLGA Erin Noel Grennan
MARGOT BELL Aja Alcazar
VICTOR PRATT..... Andrés Enriquez

An opulent, expansive bedroom in a seaside mansion.

Newport, Rhode Island - 1948

There will be one 15-minute intermission.



PENINSULA PLAYERS THEATRE IS A PROFESSIONAL THEATER EMPLOYING MEMBERS OF THE ACTORS' EQUITY ASSOCIATION, THE UNION OF PROFESSIONAL ACTORS AND STAGE MANAGERS IN THE UNITED STATES. The stage manager, assistant stage manager and all cast members of *The Angels Next Door* are members of the Actors' Equity Association.



The director is a member of the Stage Directors and Choreographers Society, a national theatrical labor union.



The costume, lighting and sound designers are members of the United Scenic Artists Union. Their work on stage is copyrighted artistic property; management respectfully requests no photographs be taken.

Please Note!

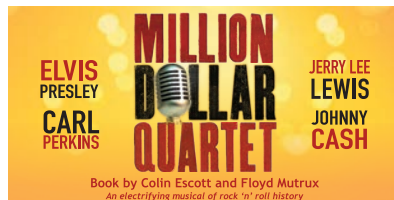
Only water is allowed in the theater.
The use of recording instruments and cameras is strictly forbidden.
Please turn off or silence all mobile devices prior to the performance.

Meet the Playwrights ...

COLLIN ESCOTT and FLOYD MUTRUX



Born in England, **Colin Escott** lives near Nashville, Tennessee. He is the author of "Good Rockin' Tonight: Sun Records and the Birth of Rock 'n' Roll," the first in-depth account of the Sun Records story. His book "Hank Williams – The Biography" has been adapted into the movie "I Saw the Light," starring Tom Hiddleston and Elizabeth Olsen. His multi-CD box set, "The Complete Hank Williams," won a Grammy, and another of his productions, "B.B. King – King of the Blues," was nominated for a Grammy. *Million Dollar Quartet* received three Tony nominations, including best book and best musical. Escott was part of the writing/producing team that adapted the show for CMT/Viacom. The first season of "Sun Records" aired in 2016.



Floyd Mutrux apprenticed at the Alley Theatre in Houston, worked at Second City in Chicago and attended Columbia University. He has conceived, written, directed or produced 50 films, including "Dusty and Sweets McGee," "Freebie and the Bean," "Aloha, Bobby and Rose," "The Hollywood Knights," "American Hot Wax," "Dick Tracy," "American Me," "Blood In, Blood Out," "There Goes My Baby," and "Mulholland Falls." With his wife Birgitte, he is preparing a new film, "Moon Over Memphis" (a rock-and-roll "Field of Dreams"). He also co-wrote the musical *Baby It's You!* with Colin Escott, and helped adapt "Sun Records," the new television series based on *Million Dollar Quartet*. *Million Dollar Quartet* received three Tony Award nominations in 2010, including best book and best musical.

Million Dollar Quartet

Shortly before Christmas, 1956, four legends—Johnny Cash, Jerry Lee Lewis, Carl Perkins and Elvis Presley—gathered at Sun Records studio in Memphis, Tennessee, the studio that launched their careers. Sam Phillips, Sun Records owner, took an active role in recording, encouraging and coaxing his untested artists to reach deep within themselves. After a news reporter wrote, "This quartet could sell a million," they were dubbed the Million Dollar Quartet. That night was their only performance, a cultural flashpoint that caught rock 'n' roll at the moment of creation. Phillips discovered and produced the Million Dollar Quartet, and he, Presley and Lewis were among the Rock 'n' Roll Hall of Fame's charter inductees, with Cash and Perkins soon to follow. Their music and recordings transformed the cultural landscape of the 20th century, and its reverberations are still heard today.



CHRISTOPHER CHASE CARTER

Director – Million Dollar Quartet

Christopher Chase Carter is the artistic director of Mercury Theater Chicago. He has been recognized for outstanding work as a director and choreographer in Chicago and the Midwest. In 2019, Chris directed the pilot production of *Scottsboro Boys*, working closely with Musical Theater International (MTI) and Susan Stroman, before directing a record-breaking production of *Legally Blonde* at Northwestern University. While earning his Bachelor of Arts from Grand Valley State University, he also studied at the Debbie Allen Dance Academy. After graduating, he earned a scholarship to study abroad at Edna Manley College of Visual and Performing Arts in Kingston, Jamaica.



MALCOLM RUHL

Music Director – Million Dollar Quartet

Malcolm returns to Peninsula Players Theatre, where he was music director for *Murder For Two* and music director/pianist for *Always...Patsy Cline*. He served as musical coordinator for the pre-Broadway production of *Million Dollar Quartet* at Chicago's Apollo Theatre. As a Chicago musician/actor/musical director, he has appeared in Goodman Theatre's *A Christmas Carol*, Lookingglass Theatre's *Eastland*, Mercury Theater's *Ring of Fire*, and *Pump Boys and Dinettes* at the Apollo Theatre Chicago and in Branson, Missouri. Chicago musical direction credits include eight Joseph Jefferson (Jeff) Award nominations, two Jeff Awards, and productions at American Blues Theater, Northlight Theatre, Drury Lane Theatre and Steppenwolf Theatre Company. In a previous century, he appeared as Jackson in the Broadway production of *Pump Boys and Dinettes*.



MICHAELA LOCHEN

Scenic Designer – Million Dollar Quartet

Michaela is a scenic and properties designer from St. Paul, Minnesota. She holds scenic design and anthropology degrees and a museum studies certificate from the University of Minnesota Duluth. She is about to enter her final year of the MFA design program at the University of Tennessee Knoxville. Recent credits include *The Servant of Two Masters* (Lyric Arts – Anoka, Minnesota), *The Pajama Game* (Artistry Theater – Bloomington, Minnesota), *Newsies* (Artistry Theater – Bloomington, Minnesota), and *It's a Wonderful Life: a Live Radio Play* (River & Rail – Knoxville, Tennessee), as well as *The Giver* (The Clarence Brown Theatre – Knoxville Tennessee), for which she won the graduate scenic design competition at this year's Southeastern Theatre Conference. This is Michaela's second summer in Door County and her design debut!

ROBERT KUHN

Costume Designer – Million Dollar Quartet

Bob is pleased to be making his Peninsula Players Theatre debut. He is a Chicago-based costume designer who recently received the Equity Joseph Jefferson Award for Best Costume Design (midsize theater) for *Priscilla, Queen of the Desert*, at The Mercury Theater in Chicago. Other favorite Chicago designs include *Hair* (Equity Joseph Jefferson nomination) and *Rock of Ages* (The Mercury Theater Chicago), *Hedwig and the Angry Inch* (Non-Equity Jeff Joseph Jefferson nomination - Theo Ubique Cabaret Theatre), *White Christmas* (Drury Lane Theatre), *Short Shakespeare! Macbeth* (Chicago Shakespeare Theater), *I Am My Own Wife* (About Face Theatre) and *Bright Star* (BoHo Theatre). Outside of freelance design, Bob is also an adjunct faculty member at Loyola University Chicago. www.robertskuhn.com



GUY RHODES

Lighting Designer – Million Dollar Quartet

Guy is excited to return to Peninsula Players Theatre, where he designed *A Rock Sails By*, *Dames at Sea*, *The Rainmaker*, *Ripcord*, *A Murder is Announced* and *Ghost the Musical*. Chicago-area credits include *The Pajama Game*, *Cabaret*, *Big Fish* (Theatre at the Center), *Dr. Jeckyll and Mr. Hyde* (Theatre Northwest), *Mother Hicks* (Hammond Academy for the Performing Arts), *Hairspray* (Star Plaza Theatre), *Jitney* (West Side Theatre Guild), and *The Last Night of Ballyhoo* (Falling Drum). National credits include

The Polar Express Train Ride (Rail Events), five tours for R&B singer Anthony Hamilton, as well as concerts for Kendrick Lamar, Alan Parsons Live Project, Anita Baker, Joe, Erykah Badu and Maze featuring Frankie Beverly. Guy frequently works in the visual disciplines of photography and video production. Top assignments include the *Pyeongchang 2018 Olympic Winter Games* in South Korea (USA Today Sports Images). Instagram: @guy_rhodes

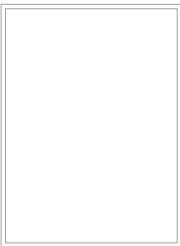


JOE COURT

Sound Designer – Million Dollar Quartet

Joe has spent the last 24 years working professionally as a sound designer, engineer and educator. His work has been heard in Chicago, New York, Los Angeles, McCarter Theatre Center, The Clarence Brown Theatre, Great Lakes Theatre, Virginia Stage Company, Actors Theatre of Indiana, and the Idaho, Lake Tahoe and Illinois Shakespeare Festivals. As an educator, he has taught at Virginia Tech, the University of Chicago and Ball State University. Joe is an artistic associate with TUTA Theatre,

Chicago. From 2008 until 2016, Joe served as sound engineer for the Chicago production of the Tony Award-winning musical *Million Dollar Quartet*. He has received three Joseph Jefferson Award nominations for his design work. Member, USA 829.



BRANDON REDD

Sound Engineer – Million Dollar Quartet

Brandon has been a professional live theater sound designer, engineer and composer for over 10 years. His work has been heard on Broadway and in regional theaters across the country, including Goodman Theatre, American Players Theatre, Lookingglass Theatre Company, Renaissance Theatreworks, Barter Theatre, PlayMakers Repertory Company and many others. He was the recipient of the 2019 USITT Robert Cohen Sound Achievement Award. He was also the sound supervisor for Lookingglass Theatre

Company and PlayMakers Repertory Company. He's a member of USA829 and TSDCA.

Million Dollar Quartet Musical Numbers

Blue Suede Shoes	Carl, Johnny, Jerry Lee, Elvis
Real Wild Child	Jerry Lee
Matchbox	Carl
Who Do You Love	Carl
Folsom Prison Blues	Johnny
Fever	Dyanne
Memories Are Made Of This	Elvis, Carl, Jerry Lee, Johnny
That's Alright Mama.....	Elvis
Brown-Eyed Handsome Man	Jerry Lee, Carl
Down By The Riverside	Johnny, Jerry Lee, Elvis, Carl
Sixteen Tons.....	Johnny
My Babe	Carl, Johnny
Long Tall Sally	Elvis
Peace In The Valley.....	Dyanne, Jerry Lee, Carl, Elvis, Johnny
I Walk The Line	Johnny
I Hear You Knockin'	Dyanne
Let's Have A Party.....	Carl, Elvis, Jerry Lee, Johnny, Dyanne
Great Balls of Fire	Jerry Lee
Hound Dog.....	Elvis
Ghost Riders In The Sky	Johnny, Dyanne, Carl, Elvis
See You Later Alligator.....	Carl, Ensemble
Whole Lotta Shakin'	Jerry Lee, Carl, Johnny, Elvis

SUBSCRIPTION has its privileges

An Evening at Peninsula Players Theatre is Like No Other

America's oldest professional resident summer theater will bring another exciting season to Door County in 2024, and we would like you to be a part of it! Sign up for the season and join us by the bay.

2024 prices: \$218.70/\$205.20/\$191.70 single
\$437.40/\$410.40/\$383.40 double



Call or stop by the Box Office today or phone 920.868.3287

Season Packages Make A Great Gift!

Free Ticket Exchange

Can't make the date you booked? Just phone our Box Office 24-hours before the show and we will move your tickets to another date, free of charge.

Flexible Options

Don't want to commit to specific dates in advance? Our Flex Subscription will suit your needs. With our flex package, you pick the dates and we will seat you in the best seats available.

Sign Up For The 2025 season! (Pricing TBD)



JAKE BUSSE

ACTOR – Million Dollar Quartet

Jake is thrilled to be making his Peninsula Players Theatre debut. Jake is a Chicago native who has performed at Raven Theatre, Citadel Theatre, Invictus Theatre Company, PULSE Theatre, Oil Lamp Theater, Surging Films and Theatrics, The Beverly Arts Center and Young People's Theatre. He studied upright bass performance at Illinois State University and is excited to combine his love of slapping the bass with his love of acting. Catch him on Season 10, Episode 19 of "Chicago Fire" entitled "Finish What You Started."

Instagram: @jake.busse

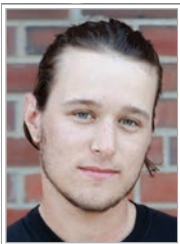


EION MELDRUM

Actor – Million Dollar Quartet

Eion is thrilled to be making his Peninsula Players Theatre debut in a role that has been a dream of his for over a decade. Recent credits include *A Christmas Carol* (Jacob Marley) and *Jersey Boys* (Nick Massi, understudy) at Little Theatre on the Square; *Hank Williams: Lost Highway* (Shag / assistant music director) at Timber Lake Playhouse; and *Bye Bye Birdie* (Conrad Birdie) at Riverbank Theatre. Eion is a graduate of Columbia College Chicago, where he received his BFA in musical theatre performance. Visit www.eionmeldrum.com for more.

www.eionmeldrum.com for more.



BEN HEPPNER

ACTOR – Million Dollar Quartet

Ben's regional credits include *Grease* [sub] (Drury Lane Theater); *The 25th Annual Putnam County Spelling Bee* (Music Theater Works); *9 to 5 The Musical* (Metropolis Performing Arts Centre); *The Best Little Whorehouse in Texas*, *Passing Strange*, *Baked! The Musical* [sub], *Assassins*, *Things We Don't Say* (Theo Ubiq Cabaret Theatre); and *Jesus Christ Superstar*, *Ain't Misbehavin'*, *Legally Blonde*, *Pippin*, *Man of La Mancha*, *The Robber Bridegroom* (guitar), *Escape to Margaritaville*, *Annie* (Timber Lake Playhouse).

Ben is a percussionist, educator (percussion director at Wheaton Warrenville South High School, Illinois) and composer with a music performance degree from Northern Illinois University. His experiences, ranging from symphony orchestra, rock/jazz bands and contemporary classical music, blend into a singular artistic voice. benheppner.org



SAM LINDA

ACTOR – Million Dollar Quartet

Sam is thrilled to make his Peninsula Players Theatre debut with the cast and team of *Million Dollar Quartet*! His credits include *The Band's Visit* (Writers Theatre/TheatreSquared); *Fiddler on the Roof* (Lyric Opera of Chicago); *The Comedy of Errors*, *All's Well That Ends Well*, *Beauty and the Beast* (Chicago Shakespeare Theater); *The Music Man*, *Damn Yankees* (Marriott Theatre); *A Chorus Line* (Drury Lane Theatre); *Twelfth Night* (Theatreworks –Colorado Springs, Colorado); and *Mr. Dickens' Hat* (Northlight Theatre). He holds a BA in theater from Northwestern University.

He holds a BA in theater from Northwestern University.

Million Dollar Quartet Song Credits

Blue Suede Shoes

(music by Carl L. Perkins; lyrics by Carl L. Perkins) © MPL Music Publishing Inc. All rights reserved. Used by permission of Wren Music Co., o/b/o Carl Perkins Music Inc.

Real Wild Child

(music by John O'Keefe, John Greenan and Dave Owens; lyrics by John O'Keefe, John Greenan and Dave Owens) (MPL Music Publishing Inc. All rights reserved. Used by permission of Wren Music Co.

Matchbox

(music by Carl L. Perkins; lyrics by Carl L. Perkins) © MPL Music Publishing Inc. All rights reserved. Used by permission of Wren Music Co. o/b/o Carl Perkins Music Inc.

Who Do You Love?

(music by Elias McDaniel; lyrics by Elias McDaniel) © ARC Music Corp. All rights reserved. Used by permission.

Folsom Prison Blues

(music by John R. Cash; lyrics by John R. Cash) Published by House of Cash, Inc. Administered by Bug Music Inc All rights reserved. Used by permission.

Fever

(music by Eddie Cooley and Johnny Davenport; lyrics by Eddie Cooley and Johnny Davenport) © Carlin America Music/Windswept Pacific Music Publishing. Published by Fort Knox Music, Inc. All rights reserved. Used by permission.

Memories Are Made of This

(music by Terry Gilkyson, Richard Dehr and Frank Miller; lyrics by Terry Gilkyson, Richard Dehr and Frank Miller) © EMI Blackwood Music, Inc. (BMI) All rights reserved. Used by permission.

That's All Right

(music by Arthur Crudup; lyrics by Arthur Crudup) © 1947 (renewed). Unichappell Music Inc. (BMI) and Crudup Music (BMI). All rights administered by Unichappell Music Inc. All rights reserved. Used by permission.

Brown Eyed Handsome Man

(music by Chuck Berry; lyrics by Chuck Berry) © Arc Music Corp. All rights reserved. Used by permission.

Down by the Riverside

(Traditional; arranged by Chuck Mead), © Zoilink Music. All rights administered by Coburn Music. All rights reserved. Used by permission.

Sixteen Tons

(music by Merle Travis; lyrics by Merle Travis) © Merle's Girls Music. All rights reserved. Used by permission.

My Babe

(music by Willie Dixon; lyrics by Willie Dixon) © Bug Music, Inc. o/b/o Hoochie Coohie Music (BMI). All right reserved. Used by permission.

Long Tall Sally

(music by Robert Blackwell, Enotris Johnson and Richard Penniman; lyrics by Robert Blackwell, Enotris Johnson and Richard Penniman) © Sony/ATV Music Publishing LLC. All rights reserved. Used by permission.

Peace in the Valley

(music by Thomas A. Dorsey; lyrics by Thomas A. Dorsey) © (renewed) 1939 Warner-Tamerlane Publishing Corp (BMI). All rights reserved. Used by permission.

I Walk the Line

(music by John R. Cash; lyrics by John R. Cash) Published by House of Cash, Inc. Administered by Bug Music Inc. All rights reserved. Used by permission.

I Hear You Knocking

(music by Dave Bartholomew and Pearl King; lyrics by Dave Bartholomew and Pearl King) © EMI Unart Catalog Inc. All rights reserved. Used by permission.

Party

(music by Jessie Mae Robinson; lyrics by Jessie Mae Robinson) © MPL Music Publishing Inc. All rights reserved. Used by permission.

Great Balls of Fire

(music by Otis Blackwell and Jack Hammer; lyrics by Otis Blackwell and Jack Hammer) © 1957 (renewed), Unichappell Music Inc. (BMI), Mijac Music (BMI), Chappell & Co., Inc. (ASCAP) and Mystical Light Music (ASCAP). All rights reserved on behalf of itself and Mijac Music, administered by Unichappell Music Inc. All rights reserved on behalf of itself and Mystical Light Music, administered by Chappell & Co., Inc. All rights reserved. Used by permission.

Hound Dog

(music by Jerry Leiber and Mike Stoller; lyrics by Jerry Leiber and Mike Stoller) Published by Sony/ATV Songs LLC. Copyright 1953 Sony/ATV Music Publishing LLC. All rights administered by Sony/ATV Music Publishing LLC, 8 Music Square West, Nashville, TN 37203. All rights reserved. Used by permission.

Ghost Riders

(music by Stan Jones; lyrics by Stan Jones) © MPL Music Publishing Inc. All rights reserved. Used by permission Edwin H. Morris & Company.

See You Later Alligator

(music by Robert Guidry; lyrics by Robert Guidry) © Arc Music Corp. All rights reserved. Used by permission.

Whole Lotta Shakin' Goin' On

(music by Curly Williams; lyrics by Curly Williams) © 1997 N'Mani Entertainment Co. (ASCAP). All rights reserved. Used by permission.

Our 89th Year
July 31 – August 18, 2024

Peninsula Players Theatre

LINDA FORTUNATO
Artistic Director

BRIAN KELSEY
Managing Director

Presents

MILLION DOLLAR QUARTET

Book by Colin Escott and Floyd Mutrux

Original Concept and Direction by Floyd Mutrux

Inspired by Elvis Presley, Johnny Cash, Jerry Lee Lewis and Carl Perkins

Scenic Designer
Michaela Lochen

Costume Designer
Robert Kuhn

Lighting Designer
Guy Rhodes

Sound Designer
Joe Court

Music Direction
Malcolm Ruhl

Sound Engineer
Brandon Redd

Scenic Artist
Jessie Howe

Stage Manager
Kimberly McCann

Assistant Stage Manager
Kaitlin Kitzmiller

Production Manager
Paul Cook

Directed by **Christopher Chase Carter**

Generously Sponsored by Alibi Marina & Harbor Guest House



Peninsula Players Theatre would like to thank The Shubert Foundation, the Wisconsin Arts Board with funds from the State of Wisconsin, and the National Endowment for the Arts for their ongoing support.

Million Dollar Quartet is presented through special arrangement with and all authorized performance materials are supplied by Theatrical Rights Worldwide 1180 Avenue of the Americas, Suite 640, New York, NY 10036. www.theatricalrights.com

Originally developed and produced by Relevant Theatricals, John Cossette Productions and Northern Lights, Inc. at the Goodman Theatre, Robert Falls, Artistic Director - Roche Shulfer, Executive Director and transferred to The Apollo Theatre, Chicago, Illinois, 2008
Produced by the Village Theatre, Issaquah, Washington, Robb Hunt, Producer - Steve Tompkins, Artistic Director, 2007 and Seaside Music Theater, Daytona Beach, Florida, Tippin Davidson, Producer - Lester Malizia, Artistic Director, 2006



Assisted listening devices are available at the canteen.
Rows A to S of the theater are equipped with a loop induction system.

The Cast in order of appearance

BROTHER JAY Jake Busse
FLUKE Ben Heppner
JERRY LEE LEWIS..... Sam Linda
SAM PHILLIPS Andrés Enriquez
CARL PERKINS Jordan Golding
JOHNNY CASH Eion Meldrum
DYANNE Aja Alcazar
ELVIS PRESLEY Garrett Lutz

Sun Records Studio

December 4, 1956

Million Dollar Quartet is performed without an intermission.



PENINSULA PLAYERS THEATRE IS A PROFESSIONAL THEATER EMPLOYING MEMBERS OF THE ACTORS' EQUITY ASSOCIATION, THE UNION OF PROFESSIONAL ACTORS AND STAGE MANAGERS IN THE UNITED STATES.
The stage manager, assistant stage manager and all cast members of *Million Dollar Quartet* are members of the Actors' Equity Association.



The sound designer is a member of the United Scenic Artists Union.

Please Note!

Only water is allowed in the theater.
The use of recording instruments and cameras is strictly forbidden.
Please turn off or silence all mobile devices prior to the performance.



KEIRA FROMM

Director – *Mary's Wedding*

Keira (she/her) is thrilled to join Peninsula Players Theatre this summer. She is a Chicago-based, Joseph Jefferson Award-nominated freelance director. Recent favorite directing credits include *The Liar*, *The Moors* and *A Doll's House* (American Players Theatre); *Who's Afraid of Virginia Woolf* (Milwaukee Chamber Theatre); *The Last Match* (Writers Theatre); *Top Girls* and *hang* (Remy Bumppo); *Brightest Thing in the World*, *Bull in a China Shop*, *Significant Other*, *Bright Half Life* and *A Kid Like Jake* (About Face Theatre); *The How and the Why* (Timeline Theatre Company); *Charles Ives Take Me Home* (Strawdog); *Broadsword* (Gift Theatre); and *Fallow* (Steep Theatre). Keira is an artistic associate with About Face Theatre. She received her MFA from DePaul University, is a Lincoln Center Directors Lab alum, and is a member of SDC, the professional directors union. keirafromm.com

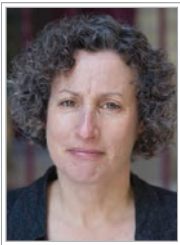


JACK MAGAW

Scenic Designer – *Mary's Wedding*, *The Stranger*

In his previous 19 seasons at Peninsula Players Theatre, Jack designed scenery for *Trying*, *Dames at Sea*, *I and You*, *Talley's Folly*, *Silent Sky*, *Living on Love* and *The Bridges of Madison County*, among many others. Recent Chicago and regional credits include *Fiddler on the Roof* (Drury Lane Theatre); the US premiere of *London Road* (Shattered Globe Theatre); the world premiere of *Relentless* (Timeline Theatre and Goodman Theatre); *Nina Simone: Four Women* (South Coast Repertory); *Tick, Tick...Boom!* (Bucks County Playhouse); the world premiere of *How to Break* (Village Theatre); *Two Trains Running* (Court Theatre) and *Porgy and Bess* (Music Theater Heritage). Jack is an adjunct professor of design at The Theatre School at DePaul University who resides in Chicago. www.jackmagaw.com

KÄRIN KOISCHKE (for bio see page 50)



NOELE STOLLMACK

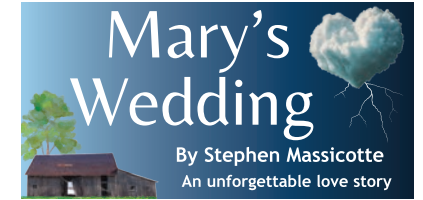
Lighting Designer – *Mary's Wedding*

Noele's lighting has appeared onstage at the Brooklyn Academy of Music, Sydney Opera House, Carnegie Hall, The Library of Congress Theatre, Verizon Hall and the opera companies of Santa Fe, Ontario, Houston, Portland, Vancouver, New Orleans, Nashville, Madison and Milwaukee. She supervised the lighting and special effects for over 50 productions as lighting director for Houston Grand Opera along with designing the lighting for Andrei Serban's *Elektra*, Dr. Jonathan Miller's *Der Rosenkavalier*, *Aida*, and the world premieres of *Harvey Milk*, *Desert of Roses*, *The Dracula Diary* and more. Her regional theater designs include Jeff Daniels' *The Purple Rose Theatre*, Baltimore Center Stage, Houston's Alley Theatre, Cincinnati's Playhouse in the Park, and Wisconsin's Milwaukee Repertory Theater, Chamber Theatre, Next Act Theatre, Skylight Music Theatre, American Players Theatre and Forward Theater Company.

Meet the Playwright ... STEPHEN MASSICOTTE



Stephen Massicotte's play *Mary's Wedding* premiered in 2002 at the Alberta Theatre Projects' playRites Festival and was the winner of the 2000 Alberta Playwriting Competition, the 2002 Betty Mitchell Award, and the 2003 Alberta Book Award. His play *The Oxford Roof Climber's Rebellion* premiered as a co-production between the Tarragon Theatre and the Great Canadian Theatre Company and was a hit off-Broadway. His play, *The Clockmaker*, premiered at the Alberta Theatre Projects' 2009 playRites Festival and won the 2009 Betty Mitchell Award for Best New Play and the 2011 Toronto Theatre Critics Award for Best English Language Play. Stephen wrote the feature films *The Dark and Ginger Snaps Back: The Beginning*, the award-winning short film *June* and *Historica Canada's Winnipeg Falcons and Nursing Sisters Heritage Minutes*. Most recently, he wrote and produced the feature film *How We Ended Us*.



CHRISTOPHER KRIZ

Composer and Sound Designer – *Mary's Wedding*

Kriz (he/him) is an award-winning composer and sound designer based in Chicago. Recent Peninsula Players Theatre designs include *Trying*, *Ken Ludwig's Baskerville: A Sherlock Holmes Mystery*, *I and You*, *Ripcord*, *A Murder Is Announced* and more. His Chicago credits include Goodman Theatre, Steppenwolf Theatre Company, Chicago Shakespeare Theater, Chicago Symphony Orchestra, Court Theatre, Timeline Theatre Company, Northlight Theatre and dozens of others. His regional design credits include Seattle Repertory Theatre, Kansas City Repertory Theatre, Indiana Repertory Theatre, Alabama Shakespeare Festival, American Stage Theatre, Crossroads Theatre, TheatreSquared, Montana Shakespeare in the Parks, Renaissance Theaterworks, Nebraska Repertory Theatre, Michigan Shakespeare Festival, and others. A winner of five Joseph Jefferson Awards with 28 nominations, Kriz is a proud member of United Scenic Artists 829. To hear his work, visit christopherkriz.com.



JANYCE CARABALLO

Actor – *Mary's Wedding*

Janyce is excited and thankful to make her Peninsula Players Theatre debut! Her select Chicago theater credits include work with Drury Lane Theatre, Northlight Theatre, Teatro Vista, Raven Theatre, Chicago Children's Theatre, Theo Ubique Cabaret Theatre and Emerald City Theatre. Her regional credits include Indiana Repertory Theatre, American Players Theatre, Marriott Theatre, First Folio Theatre and TheatreSquared. She received a Master of Fine Arts in acting at The Theatre School at DePaul University and is represented by Paonessa Talent Agency.

Our 89th Year
August 21 – September 1, 2024

Peninsula Players Theatre

LINDA FORTUNATO BRIAN KELSEY
Artistic Director Managing Director

Presents

MARY’S WEDDING

By Stephen Massicotte

Scenic Designer Costume Designer Lighting Designer
Jack Magaw Kärin Simonson Kopischke Noele Stollmack

Composer/Sound Designer Movement Director Scenic Artist
Christopher Kriz Linda Fortunato Jessie Howe

Stage Manager Assistant Stage Managers Production Manager
Kaitlin Kitzmiller Kimberly McCann Paul Cook
Alden Vasquez

Directed by Keira Fromm

Generously Sponsored by
Door County Medical Center & Jean Kapolnek



Peninsula Players Theatre would like to thank The Shubert Foundation, the Wisconsin Arts Board with funds from the State of Wisconsin, and the National Endowment for the Arts for their ongoing support.

Mary’s Wedding is presented by special arrangements with the playwright.

The world premiere of *Mary’s Wedding* was presented as part of the 2002 playRites Festival of New Canadian Plays at Alberta Theatre Projects. The playwright acknowledges the assistance of the Banff Playwrights Colony – a partnership between the Canada Council for the Arts, The Banff Centre and Alberta Theatre Projects.



Assisted listening devices are available at the canteen.
Rows A to S of the theater are equipped with a loop induction system.

The Cast

CHARLIE..... Jordan Golding
MARY/FLOWERS Janyce Caraballo

Place/time:

Rural Canada, 1920, in the aftermath of World War I

Mary’s Wedding is performed without an intermission.



PENINSULA PLAYERS THEATRE IS A PROFESSIONAL THEATER EMPLOYING MEMBERS OF THE ACTORS’ EQUITY ASSOCIATION, THE UNION OF PROFESSIONAL ACTORS AND STAGE MANAGERS IN THE UNITED STATES. The stage manager, assistant stage managers and all cast members of *Mary’s Wedding* are members of the Actors’ Equity Association.



The director is a member of the Stage Directors and Choreographers Society, a national theatrical labor union.



The scenic costume, lighting and sound designers are members of the United Scenic Artists Union. Their work on stage is copyrighted artistic property; management respectfully requests no photographs be taken.

Please Note!

Only water is allowed in the theater.
The use of recording instruments and cameras is strictly forbidden.
Please turn off or silence all mobile devices prior to the performance.



MAGGIE KETTERING

Director – *The Stranger*

Maggie is thrilled to return to Peninsula Players Theatre, where she directed last autumn's Ken Ludwig's *Baskerville: A Sherlock Holmes Mystery* and performed in *Miss Holmes*, *Outside Mullingar* and *Lend Me a Tenor*. Most recently, she directed *Emma* (Door Shakespeare), *Educating Rita* and *The Thanksgiving Play* (Lean Ensemble Theater). She was a company member for over six seasons at Great Lakes Theater and regionally has worked with Repertory Theatre of St. Louis, Milwaukee

Repertory Theater, Northlight Theatre, House Theatre (Joseph Jefferson Award nomination), Shakespeare Theatre Company, TimeLine Theatre Company, Delaware REP, and others. Maggie is a resident of Chicago, an Ironman finisher, has a BA and MFA, and is working on an MS to become a CCC-SLP. One day, she hopes to have all the letters of the alphabet.

JACK MAGAW (for bio see page 58)



YVONNE L. MIRANDA

Costume Designer – *The Stranger*

Yvonne (she/her) is excited to make her design debut at Peninsula Players Theatre for this production of *The Stranger*. She is a United States Marine Corps war veteran who pursued degrees in fashion and stage design. In 2022, she received a Helen Hayes Award nomination for costume design for her work on Woolly Mammoth Theatre and Baltimore Center Stage's co-production of *Ain't No Mo*. In 2023, Yvonne was named in *American Theatre Magazine's* *Role Call: People to Watch*. You can check out more

about Yvonne and her upcoming work at www.yvonnemirandadesigns.com



TREY BRAZEAL

Lighting Designer – *The Stranger*

Trey is happy to be designing his first show at Peninsula Players Theatre. Some of his other credits include *Cinderella* (Cape Fear Regional Theatre), *The Lightning Thief: A Percy Jackson Musical* (Millikin University), *Lady Day at Emerson's Bar & Grill* (Pennsylvania Shakespeare Festival), *Manual Cinema's: A Christmas Carol and Leonardo! A Wonderful Show About a Terrible Monster* (Manual Cinema), *The Addams Family Musical* (Ohio Northern University), *Much Ado About Nothing* and *Fences* (The

Olney Theatre Center), and *The Last Five Years* (Third Avenue PlayWorks).



VICTORIA DEIORIO

Sound Designer – *The Stranger*

Victoria's Peninsula Players Theatre credits include *Blithe Spirit*, *Opus*, *A Few Good Men*, *Comic Potential*, *Wait Until Dark*, *Born Yesterday* and *Greetings*. Off-Broadway: *Dracula: A Comedy of Terrors* (New World Stages), *Nine Circles* (Sheen Center), *A Christmas Carol* (St. Clements), *Two Point Oh* with Active Theatre (Primary Stages), *Arnie the Doughnut* at the NYMTF (The Pearl), *Cassie's Chimera* (Joe's Pub-The Public); *The Bluest Eye* with Steppenwolf (The Duke Theatre), and others. Regional:

Oregon Shakespeare Festival, Goodman Theatre, Steppenwolf Theatre, Hartford Stage, Long Wharf Theatre, Syracuse Stage, Cleveland Playhouse, Indiana Repertory Theatre and many others. Victoria has won seven Joseph Jefferson Jeff Awards, two After Dark Awards and a SALT Award. She was the head of Sound Design at DePaul University. For more information, visit bio.site/VictoriaDeiorio.

Meet the Playwright ... AGATHA CHRISTIE



Agatha Christie, 1964 ©

Agatha Christie (1890 - 1976) is known worldwide as the Queen of Crime. Her books have sold over a billion copies in English, with another billion in foreign languages. She is the most widely published author of all time and, in many languages, outsold only by the Bible and Shakespeare. She is the author of 66 crime novels, 150 short stories, over 20 plays, and six novels written under the name Mary Westmacott. Her work includes *Murder on the Orient Express*, *Death on the Nile* and the genre-defining *And Then There Were None*.



Christie's first novel, "The Mysterious Affair at Styles," was written towards the end of the First World War, in which she served in the Voluntary Aid Detachment (VAD). In the novel, she created Hercule Poirot, the little Belgian detective who was destined to become the most popular detective in crime fiction since Sherlock Holmes. It was published by Bodley Head in 1920.

In 1926, after averaging a book a year, Christie wrote "The Murder of Roger Ackroyd," her first masterpiece. It was the first of her books to be published by Collins and marked the beginning of an author-publisher relationship that lasted for 50 years and well over 70 books. It was also the first of Christie's books to be dramatized – under the title *Alibi* – and to have a successful run in London's West End.

By 1930, Christie had introduced a new character to act as detective. When she created Miss Marple, Christie did not expect her to become Poirot's rival. But with "The Murder at the Vicarage," Miss Marple's first full-length outing, it appeared she had produced another popular and enduring character.

The Mousetrap, her most successful play, opened in 1952 and is the longest-running play in history. Christie was made a dame in 1971.

Agatha Christie Limited (ACL) has been managing the literary and media rights to Agatha Christie's works around the world since 1955, working with the best talents in film, television, publishing, stage and on digital platforms to ensure that Christie's work continues to reach new audiences in innovative ways and to the highest standard. The company is managed by Christie's great-grandson James Prichard.

Visit www.agathachristie.com for more information.



TRENTON JONES

Assistant Scenic Designer – *The Stranger*

Trenton first worked with Peninsula Players Theatre as a production intern in 2019 and is thrilled to be back! Trenton works as a scenic designer and artist in Chicago, where he has painted for theaters such as Writers Theatre, Buffalo Theatre Ensemble, Remy Bumpo Theatre Company, and many more. He spent the last three summers as a designer and teaching artist for Noblesville High School's Summer Theatre Arts Program. He received his BFA in scenic and production design from DePaul University.

Our 89th Year

September 4 – October 20, 2024

Peninsula Players Theatre

LINDA FORTUNATO
Artistic Director

BRIAN KELSEY
Managing Director

Presents

THE STRANGER

By Agatha Christie

Scenic Designer
Jack Magaw

Costume Designer
Yvonne Miranda

Lighting Designer
Trey Brazeal

Original Music Sound Designer
Victoria Deiorio

Assistant Scenic Designer
Trent Jones

Stage Manager
Wilhelm Peters

Production Manager
Paul Cook

Scenic Artist
Jessie Howe

Directed by Maggie Kettering

Generously Sponsored by Main Street Market,
Barbara & Richard Board and Margaret & Dale West



Peninsula Players Theatre would like to thank The Shubert Foundation, the Wisconsin Arts Board with funds from the State of Wisconsin, and the National Endowment for the Arts for their ongoing support.

The Stranger is presented by arrangement with Concord Theatricals on behalf of Samuel French, Inc. www.concordtheatricals.com

The Stranger © 1932 Agatha Christie Limited All rights reserved. 'AGATHA CHRISTIE' and the Agatha Christie Signature Mark are trademarks of Agatha Christie Ltd.. All rights reserved. The rights to this play are controlled by Agatha Christie Ltd.. For further information about this play, others by Agatha Christie and about other stage adaptations of her stories, please visit: <http://www.agathachristie.com>



Assisted listening devices are available at the canteen.
Rows A to S of the theater are equipped with a loop induction system.

The Cast in order of appearance

DORIS WEST Aja Alcazar
MRS. HUGGINS McKinley Carter
ENID BRADSHAW Sarah Coakley Price
GERALD STRANGE Andrés Enriquez
DICK LANE Garrett Lutz
MRS. BIRCH..... McKinley Carter

Act I

A flat in Kensington, a spring morning in the early 1930s

Act II

A cottage in the country, three months later

There will be one 15-minute intermission.



PENINSULA PLAYERS THEATRE IS A PROFESSIONAL THEATER EMPLOYING MEMBERS OF THE ACTORS' EQUITY ASSOCIATION, THE UNION OF PROFESSIONAL ACTORS AND STAGE MANAGERS IN THE UNITED STATES.
The stage manager and all cast members of *The Stranger* are members of the Actors' Equity Association.



The costume, scenic and sound designers are members of the United Scenic Artists Union. Their work on stage is copyrighted artistic property; management respectfully requests no photographs be taken.

Please Note!

Only water is allowed in the theater.
The use of recording instruments and cameras is strictly forbidden.
Please turn off or silence all mobile devices prior to the performance.
See next page for notes/edits/inclusions:

The Peninsula Players Theatre Annual Fund

The following have shown their commitment to the theater by making an investment in our Annual Fund between **May 1, 2022** and **August 22, 2023**. These contributions are invested back into our community and theater in several ways: 1) Top Quality Entertainment-we hire the best available talent; 2) Training Youth-our interns get unparalleled experience working with these professionals; 3) Historic Beauty-we preserve and enhance our beautiful and tranquil wooded shoreline for you to enjoy; 4) Community-Seminars, play readings, school programs and more enrich Door County life year-round. Our sincerest thanks to:

Annual Funds

Annual Funds

Annual Funds

Annual Funds

Annual Funds

Annual Funds

Memorials & Honorariums

Memorial gifts are a unique way to keep your loved one's memory and legacy alive. Honorarium gifts celebrate a special person or event (birthdays, anniversaries, etc.) in your life. Remember a life well lived or honor someone you love by making a donation today.

Annual Funds

Corporate Matches

The following organizations have matched employees' charitable contributions. Matching gifts are an easy way to double your contribution to the Players. Find out if your employer has a matching gift program today!

In-Kind Donations

The following individuals and businesses have provided in-kind support in the form of goods and services.



Act II PROTECTING THE PAST ENSURING THE FUTURE

It is a great pleasure to share with you that we have successfully closed our Housing Campaign! Thanks to the generosity and support of the over 660 donors listed below, we raised \$4.3 million and completed the construction of the new dormitories in May 2023. We are eternally grateful to our community for their unwavering dedication to our cherished theater and the arts in Door County.

GOLD FOUNDER \$500,000+

The Patrick & Beatrice
Haggerty Foundation

FOUNDER \$250,000 – \$499,999

The 1923 Fund
The Boldt Company
The Dwight & Linda Davis Foundation
The George Kress Foundation

PRODUCER \$100,000 – \$249,999

Anthony W. & Andrea Bryant
Tony & Judy Licata
Nicholas Family Foundation
John & Dyan Smith

PARTNER \$50,000 – \$99,999

Nancy & Dave Borghesi
Chris Cramer
In Memory of Tricia Cramer
& Maggy Magerstadt
Barbara Gould
MMG Foundation, Inc.
Wisconsin Public Service Foundation

BUILDER \$25,000 – \$49,999

AA Harvey Foundation
Patrick & Anna M. Cudahy Fund
Tim & Jackie Danis
Marianne Diekman
The Fales Family
In Memory of Dennis Fales
Paul & Sandy Fernstrum
Larry & Kathy Gentine
The Glenn Family
In Memory of William C. Glenn
Halloran Law Offices
Tom & Wendy Halloran
In Memory of Olivia Dahl
Kandy & Bill Higley
Jean M. Kapolnek
James E. & Mary K. Nelson
Ellsworth & Carla Peterson

Charitable Foundation
John & Clare Plachetka
In Memory of John
& Romayne Neumann

Reliance Controls Foundation
E. Louise Rogers
In Memory of H. David Rogers
Security Fence & Supply
Wayne & Clea Semmerling
The Tatman Foundation

SUPPORTER \$10,000 – \$24,999

Anonymous (2)
Hugh & Joyce Bell
Linda & John Blossom
Steve & Julia Chomeau
Tom & Meg Claggett
Peter & Myra Cristall
Cynthia & Larry Crock
Tom & Bev Dalton
Ron & Candy Welcker Dammon
In Honor of Hedwig Welcker
Kärin Erickson
Gail Fischer
Don & Barbara Fuhrmann
Roy & Betsy Gill
Sara Glenn & Brian Reinhardt
Great Northern Construction, Inc.
David Hawkanson
John & Nell Herlache
Jill & Tom Herlache
Marian Hislop Family Foundation
Bjorn & Kitty Hooper
Aaron Matthew Memorial
Charitable Fund
Nicolet National Bank
The Palmer Foundation
Peggy Reineck-Simpson
Eugene V. Remy
Tim & Sue Stone
Michael Teich & Peggy Kelsey
In Honor of Brian Kelsey
John C. & Judith A. Turner

David & Julia Uihlein
Pam & Bill Welter
Jerry & Joan Zaug

CONTRIBUTOR \$5,000 – \$9,999

Anne & Darrel Brodke
Vonnie & Dave Callsen
Betty & Dave Chomeau
Andy & Jan Coulson
Linda Dasher
Nancy & Jim Forbes
George & Natalie Gorchynsky
Teresa & Kevin Grant
Cathy Hoke
Jay & Cynthia Ihlenfeld
In Memory of Jeanne
& Vining Ihlenfeld
Edward & Jeannine James
Barbara Keller
Brian Kelsey & Phil Berndt
Walter & Catherine Piper
Patsy & Bill Reichert
Greg & Denise Stillman
True North Real Estate

FRIEND \$1,000 – \$4,999

Anonymous
Katy Andino
Dr. & Mrs. David Arneson
Martha Bagley
Elizabeth Bedwell & Greg Capper
Bev Blietz
Sarah & Brian Bonovich
Scott M., Conor &
Audra Baakari Boyle
Gil & Joyce Carlson
Elizabeth Holstein Delgass
Peter & Gina Deschler
Lowell & Mariclaire Dixon
Annie & Dick Egan
Hugh Epping & Deborah Cookingham
Scott & Laura Ferguson
David Flegel

Linda & Sean Fortunato
 Faith Gay & Francesca Zambello
 Bob & Nancy Gellman
 Ann Glessner
 Ron & Mary Greisen
 Ann C. Harty & Christa Hartmann
 Beth Healy & Mike Fordney
 Barbara Hirsch
 Bill Hoag
 Bryan & Dorothy Hollenbach
 Barbara & Dave Holman
 Jim & Judy Houghton
 Brian & Kristin Johnson
 Katrina Kamps
 Jack & Karen Kellner
 Nancy & Ted Laitner
 Deb Lampert
 Jerry Lecy
 Jill & John Levi
 Mary & Brian Liddy
 Mardell Liethen
 James & Carole Maronek
 Mary McDermid
 Sue McFaul-Decker
 John & Alice Meiners
 Gary & Vickie Nixon
 Joyce Nordbeck
 Arne C. & Peggy A. Odegaard
 Janice Olson
 In Memory of H. David Rogers
 Chuck Oslakovic
 Robert & Catherine Parks
 Bill & Betty Parsons
 Sylvia Pratt & Tom Dörner
 Todd & Sheryll Rockway
 Gordon & Naomi Rowley
 John & Susan Schaper
 Janice L. Schaub
 Dr. & Mrs. Jeffrey P. Schwab
 In Honor of Tom Birmingham
 Emmy & Steve Stanley
 Jerry Bloom Stephenson
 Robert & Stacy Stutz
 Lynda Szczepanik
 Jason & Danielle Szmanda
 Dean & Louise Trafelet
 Barbara & David Tuch
 Greg & Jodi Wait
 Stephen & Delisa White
 Dr. & Mrs. Kevin & Cindy Wienkers
 Suzanne & Thomas Wilkinson
 Jim & Kathy Wochinske
 Barbara & Robert Ziegler

DONOR \$50 – \$999
 Anonymous (11)
 Mural & Kay Adams
 Thomas L. Aerts
 Ramin Alemzadeh, MD
 Sharee Allain & David Schertz Family
 Tom & Sue Alt
 Michael & Joanne Ames
 Lynn Anderson-Rajski
 Marian K. Anderson
 Penny & David Anschutz
 William & Nancy Antink
 Gerald & Diane Aschenbrenner
 Stephanie & Charles Baer
 Joe & Jackie Baldyga
 David & Judith Barker
 Linda Barkhurst
 Judy & John Barragry
 Jean Barrett & Paul Neuman
 Rita Barta
 Arlene Bartolini
 Marian Bauer
 Tim & Lisa Beckelhimer
 John E. Begalke
 John & Alice Belmont
 Anita M. Bender
 Fran & Paul Beno
 Kevin & Mary Berens
 Paula & Earl Binczak
 Daniel & JoAnna Birmingham
 Pam Blanchard
 Francis & Patricia Blanchette
 Terry & Darlene Blanz
 Don & Karen Bloczynski
 Margaret C. Boehm
 Constance Bolenbaugh
 Christine RX Bolles
 Carole Borg
 Deborah G. Boyd
 Carolyn L. Bridenhagen
 Kathy Brinnehl
 Cynthia Brooks
 Paul & Carol Brott
 Bill Brown
 David J. Brusky
 Sue & Jim Buck
 Bucyrus Foundation
 Eric & Jamie Buesing
 Beth & Kenneth Burkhardt
 C. Conrad Cady
 Paul & Sandi Cain
 Molly Cairnes
 Greg Calabresa & Shirley Kopel
 M. & B. Callahan
 Ann Callaway
 Tim & Mary Carew

Juanita G. Carlson
 Marilyn Carolan
 George & Dorothea Carson
 Tony & Donna Charles
 Trudy & Tony Chelmecki
 Dan & Laura Chick
 Joseph Clabots
 Peter & Carol Cliekeman
 Lorin & Karen Cole
 Chris & Judi Collins
 Peter J. & Mary Alice Costello
 Greg & Lorna Cote
 Margo Crook
 Trissa Crowley
 David & Laura Croysdale
 Jim & Ellen Danielsen
 Michael & Priscilla Daniels
 Robert & Marlene Davison
 Stewart Dawson
 Rita Dean
 Bill & Mary Jo Dean
 Bob & Laurie Defoe
 Jodee DeGroot
 In Memory of Digger DeGroot
 Jim & Connie Devine
 Patrick & Pamela De Wane
 Paul Didion & Yvonne Bellay
 Robert & Lynn Doneff
 Patrick & Patti Doughman
 Steve & Jackie Draws
 Anne Dropp
 Joseph & Sara Drummond
 Mary Ellen Duchin
 Steve & Deb Dullard
 Beverly Dusso
 Yvonne & John Dwonch
 Eagle Mechanical, Inc.
 Tom & Linda Ealy
 John & Judy Eckert
 Dave & Sandy Ehren
 Ed & Alice Eisendrath
 Marla Eland
 Michael Elkow
 Diane S. Evenson
 Don & Jan Fariss
 Stewart & Theresa Fett
 Bob & Joan Fisher
 Rich & Cathy Fitch
 Mark Ferminach & Nora Flood
 Deb Ford
 Diane & Pat Ford
 Jeff Franz & Ruth Engs-Franz
 Fred & Barb Frey
 Terry & Kris Fulwiler
 Stephen & Diane Galarneau
 Joanne & Steve Gilson
 Mark Gnabaski

Brian & Sharon Godfrey
 Paul Gordon
 Paul A. & Jane A. Graf
 Barbara Grande
 Rev. Patrick & Kathryn Green
 Gerard Grzyb
 Sheldon Gulinson & Carol Sobel
 Paul & Kate Habegger
 Rich & Sue Hagel
 Bill & Suzy Hale
 Douglas & Barbara Hambleton
 Nancy Ann Hammen
 James & Malisa Harper
 Gary & Annamaria Hauser
 Jennifer Hazaert
 Bob & Gerri Heffron
 Tom Helminger
 Gary & JoAnn Henger
 Laura A. Henke
 Beth & Patrick Hennes
 Larry & Nancy Henry
 Paul & Linda Hering
 Ken & Jeannie Hill
 Ron Hilton
 Mary Anne Himmes & Tom Theis
 Stu & Linda Hoar
 Victoria Hoell
 Mr. & Mrs. Louis K. Hoelzl
 Susan & Leon Hoffman
 James & Judith Hollister
 Barbara Holm
 Virgil & Sandra Huhmann
 Christopher Huson
 Jack & Jo Ann Isselman
 Deb Jacobs
 Dennis Janda
 Leah Jerabek
 Mary & Bruce Johnson
 Thor & Darlene Jondahl
 Lee & Ken Jones
 Michael & Patricia Judge
 DebraLynn Katrein
 Dee Ann Keip
 Connie & Richard Kellogg
 Liz Kelly & Peter Coladarci
 Peter & Kelly Kelly
 Jan Kemble
 Paul Kendall
 Karl & Marge Kenkel
 Tom & Alice Keough
 Dennis & Barbara Kessler
 Linda & Mike Kielas
 Don & Becky King
 James & Linda King
 Peter & Pat King
 Robert A. Kinmonth

Carol Ann Kizior
 Dr. Dick & Cindy Koch
 Sharon Koenen
 Lenore Konkel
 Patricia & David Kraus
 Julie-Anne Kress
 Kathy & Ray Kronforst
 Kay Krueger
 Karen Krumm
 Kathy & Wayne Kubick
 Mike & Kelle Kucharski
 Wayne & Julie Kudick
 Jim & Connie Kunde
 Kathryn Labuhn
 Mary Ladd
 Jane Lang
 Richard & Barbara Laplant
 Jim & Judy LaPlant
 BJ Larsen
 Estella & Charles Lauter
 Cheryl LeeVan
 Gregg & Carolyn Lemein
 MaryAnne Limbos
 Terry & Evelyn Logue
 Peggy Lott
 Jeanne & Larry Lucier
 Brian & Tina Lueck
 Edee Madsen
 Gail Magowan
 Carrie & Chris Mahnke
 Jim & Jayne Majzan
 Jim & Carole Maronek
 Lee Marquardt
 John A. Martin
 Deb & Rick Mason
 Randy & Karen Mathewson
 Ron & Lois Mauermann
 Mike & Carol Mazurkiewicz
 David & Joy McBride
 Marcie McDevitt
 Donna McGreal & Robert Clemens
 Diane Meiborg & Roger Zacek
 Joe & Pat Melendes
 Joe & Ardith Messicci
 Patti & Al Meyer
 James & Suzanne Miller
 George & Barbara Mischio
 Grant & Linda Mitchell
 Wayne & Barbara Mohr
 Robert & Jeanne Momsen
 Ed & Marcia Moore
 Mary J. Moore
 Al & Kathy Moorman
 Nancy Morris
 Mary & Matthew Mueller
 Dominick Mugavero

Mary Murray
 Amy Weiss Narea
 Carmine & Steve Nell
 Tuffy Nell
 Ann Nelson
 Jim & Judi Nelson
 Rick & Patty Nelson
 David New
 Rich & Barb Nickels
 Bradley & Patricia Nielsen
 Katie & Don Normington
 John & Donna Nygaard
 John O'Donnell & Bonnie Humphrey
 Harriet & John Paral
 Lou & Barb Pasquesi
 Lynn R. Peters
 Barbara & Daniel Peterson
 Paul & Karen Pfeffer
 Wendy & Dave Pike
 Don & Donna Pingel
 Tom & Lynn Polacek
 Jerry & Lynn Pomprowitz
 Ryan Funk & Tina Poquette
 Keith & Antoinette Powell
 Rick & Betty Prosis
 Bob & Marilyn Przywara
 Erik & Sara Quam Family
 Joe & Marie Rakoczy
 Richard Rasmussen
 & MaryAlice Minard
 Mary C. Raven
 John & Paula Reeger
 Ron & Donna Relic
 Denis Reoh
 William D. Ricker
 Karen & Carl Rinaldi
 George & Jean Risberg
 Ellen Rivers
 James & Terry Roemig
 George & Kristi Roening
 Alan & Leanore Rommelfanger
 Karyl Rommelfanger
 Mary E. Rosecky
 Linda J. Rosenbaum
 Rebecca & Charles Rump
 Lynda & Laird Salisbury
 Neal & Joan Sanders
 Sara & Ed Sarna
 Bruce & Christine Sautebin
 Jean Schedler
 David & Marilyn Scherer
 Alan & Roberta Schimek
 Mary & Ed Schipp
 Jeannine Schlatter
 Dave & Chris Schmidt
 Carmela Schmitz & Stan Arrowood

Karl & Marcia Schneider
 Mary Ann Schnur
 William Schoendorf
 William & Judith Schuele
 John & JoAnn Schultz
 Mark & Leslie Schwenk
 Jan & Linda Scott
 William & Rebecca Scroggins
 Gary & Kathy Sedan
 Doug & Julie Shank
 Dennis & Vicki Sheldon
 Karen Sheridan
 Michael Siegmund
 Barbara & Jack Simon
 Rick & Mary Skelley
 Karen Sladden
 Christopher Slavik
 Bob & Chris Snyder
 Kathy & Larry Sorensen
 Lee & Bridget Spude
 Stephen & Suzanne Standerford
 Mr. & Mrs. C.A. Stankus
 Dan & Mary Ellen Stanley
 Matthew Stiffler & Ellen Hampton
 James & Joan Stillman
 Ruth & Tom Stram

Melody Streeter
 Sandra Strutzel
 Roman & Donna Strzala
 Jerome & Irma Sund
 Bonita Swan
 Ben & Anne Swoboda
 Phil & Sally Tarvin
 Mary Tegen
 William & Louise Temte
 Susan & Mark Tesch
 Kristine Thatcher
 Albert Thomas
 Steven L. Tietz
 Michael & Pam Todd
 Geri Torti
 Charles & Sandra Trainor
 Lisa A. Ubbelohde
 Linda Van Dyke
 Ben & Deborah Van Zoest
 Richard & Elizabeth Verhagen
 Greg Vinkler
 Wess Vogt
 Nick & Jane Wanda
 Barb & Dave Warmbrodt
 Stacey Jo Johnson Watson
 James & Regina Webb

Jan Weber
 Karen Wedemeir
 Jane Weis
 Leanne Welker
 James & Stephanie Werner
 Leonard & Paula Werner
 Richard & Patricia White
 Leslie L. Wilde
 William & Sharon Wildman
 Don & Maddy Wirth
 Mindy Wirth
 Carmen & Gene Witt
 Steve & Mary Witte
 Karen Wojahn
 Henry Wojtyla
 Mr. & Mrs. David Wood
 Leslie Woolley & Doyle Bartlett
 Paul Bosanac & Barbara Yingling
 Sharon & Byron Zeisler
 Norb & Annie Zelewski
 Lee Zwik

ADDITIONAL SUPPORT

Kohler Co.
 The Raibrook Foundation



Have you enjoyed performances at Peninsula Players Theatre and wondered how you can help ensure its unique environment is preserved for generations of theatergoers?

There are many ways you can support Peninsula Players Theatre!

- Attend performances
- Attend Peninsula Players Theatre's winter play reading series The Play's the Thing
- Share the Peninsula Players Theatre experience by giving a gift certificate
- Celebrate a special occasion, such as an anniversary, by donating to the Annual Fund
- Honor a friend or loved one by making a donation in their memory
- Become a playbill advertiser
- Volunteer for the Broom Squad, the spring cleaning crew
- Sponsor a play
- Name a seat in the theater
- Attend a pre-show seminar
- Attend a post-show discussion
- Volunteer to usher

For the past 89 years, Peninsula Players Theatre has relied on the goodwill and generosity of our patrons to help advance our mission and continue to provide exceptional theatrical experiences.



If you have come to value these outstanding performances and the remarkable beauty of the theater and grounds, please consider making a tax-deductible gift to our Annual Fund. Thank you!

Yes! I want to contribute to the Peninsula Players Theatre's Annual Fund.

Name _____
(as you would like it to appear in our Playbill for gifts of \$50 or more)

Address _____

City _____ State _____ Zip _____

Email _____ Please save a stamp - email my receipt.

Amount Enclosed \$ _____ Phone # _____
(Please make checks payable to: Peninsula Players Theatre Foundation, Inc.)

Amex Discover MasterCard Visa (circle one) CVV-code _____

Number _____ Exp. Date _____

Does your employer match your contribution? _____

Peninsula Players Theatre EIN is 39-0986031

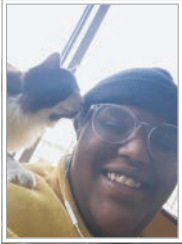
**Please mail the above form along with your donation to:
 Peninsula Players Theatre, 4351 Peninsula Players Rd., Fish Creek, WI 54212**



ANNI & DEB LAMPERT

Cook & Head Chef

Once upon a time, Mrs. Lampert had a beautiful daughter, then another (then another, but that's a story for another day). One decided she was the queen, and the other decided to be a princess. Now they run our kitchen and feed us all summer. God save the queen and the princess, too. You may know them as Deb Lampert and Anni Lampert. They live in a small castle in Sturgeon Bay, where they exercise active imaginations but rarely caution.



ELIZABETH JACKSON

Cook

E has been cooking since the ripe age of 7. And, like wine, has only gotten better with time. Hailing from the coastal region of Georgia, they like to infuse southern charm in everything they do. When not cooking, you can catch them hiking, reading or sleeping.



ERIC SMITH

Landscape Design/ Grounds Manager

Eric returned to Door County nine years ago to establish himself as an artist and pursue his talented career in Landscape Design. He brings to the theater more than 20 years of experience in design and landscaping, having worked for companies such as Leids Nursery and David J. Frank Landscaping. He served as grounds manager for Community Memorial Hospital in Menomonee Falls and as a computer graphics art designer at Flexcraft, Inc. in Wisconsin. Eric's special talents for landscape painting, photography

and his love for the outdoors add to his ability to create the beautiful gardens that are displayed throughout the property of Peninsula Players Theatre. Truly a work of art in the making!



PENINSULA PLAYERS
at The Theatre in a Garden



Give the Gift of a Lifetime!

Share your passion for Peninsula Players Theatre with future generations by designating a planned gift to the theater through the Peninsula Players Theatre Endowment Fund. Whether it is a bequest, trust, annuity or arrangement through your IRA, planned gifts of all sizes support Peninsula Players Theatre's long-term fiscal stability and reduce your taxable estate for federal tax purposes.

The Peninsula Players Theatre Endowment Fund is managed through the Door County Community Foundation. Through this partnership, your generous gift will benefit Peninsula Players Theatre while the foundation's professional staff and advisers facilitate your contribution and handle all the administrative details. The Door County Community Foundation provides a simple, powerful and highly personal approach to giving. By working together, we offer a variety of giving tools to help you achieve your charitable goals.

By partnering with the Door County Community Foundation, Peninsula Players Theatre is able to receive a wide variety of assets including:

- Cash, stocks and bonds
- Real estate and other assets
- Non-cash assets such as publicly traded stock or artwork

The Door County Community Foundation is the ideal vehicle to facilitate even the most complex forms of charitable giving. Please consider incorporating a gift to the Peninsula Players Theatre's Endowment Fund in your estate plan.

To leave a bequest in your estate plans, please use the following verbiage: "I hereby give and bequeath to Peninsula Players Theatre Foundation Inc., a not-for-profit corporation having a principal place of business at 4351 Peninsula Players Road, Fish Creek, WI 54212, Federal Tax ID #39-0986031, (specific amount, percentage of estate, or specific property) for the Peninsula Players Theatre Endowment Fund."

To learn more about the Peninsula Players Theatre Endowment Fund, please contact Development Director Danielle Szmanda, at (920) 868-3287 or danielle@peninsulaplayers.com or Bret Bicoy, President & CEO at the Door County Community Foundation at (920) 746-1786 or bret@givedoorcounty.org.

Young Automotive is a proud supporter of our local arts!



Door County's Car Care Crew
Sturgeon Bay
920.743.9228



Door County's Top Listing & Selling Locally Owned Agency!

14 S. Third Avenue
Sturgeon Bay, WI 54235
920-743-4321 800-661-8555
email: info@erastarr.com

View All Our Listings at
www.erastarr.com



2594 Bay Shore Drive
Sister Bay, WI 54234
920-854-2394 800-720-6888
email: info@erastarr.com



Serving Door and neighboring counties for over 75 Years.

Personal Injury • Wills, Trusts & Elder Planning • Criminal
Family Law • Zoning & Land Use • Real Estate
Municipal Law • General Litigation



James R. Smith



Richard A. Hauser



Jon R. Pinkert



Jennifer C. Hobart



Amy M. Sullivan



Tyler D. Pluff



Hannah J. Smith



Zachary J. Buchta

pinkertlawfirm.com

Experienced • Loyal • Local

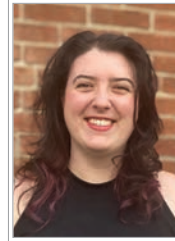
920.743.6505



GARRETT CONARD

Technical Director

Garrett is excited to join the Peninsula Players Theater for a second summer as technical director. He received his BA in theater from the University of Northern Iowa with emphases in design/production, drama and theater for youth. He has served as the assistant technical director at Park Square Theater in St. Paul, Minnesota, and a carpenter at the Omaha Community Playhouse in Omaha, Nebraska.



MADELAINE FOSTER

Prop Shop Supervisor

Madelaine is a property and scenic artist currently based in Minneapolis. Most recently, she was the assistant properties shop manager at the Indiana Repertory Theatre, where she worked for five seasons. Her work has graced the stages of Theater at Monmouth (Monmouth, Maine) and Shakespeare and Company (Lenox, Massachusetts). Madelaine is excited for her first season with Peninsula Players Theatre.

**Peninsula Players Presents YouTube Series -
The History of Peninsula Players Theatre**



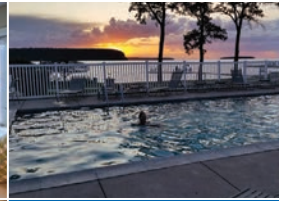
Learn the history of Peninsula Players Theatre on YouTube, where hosts Greg Vinkler, our former artistic director, and Business Manager Audra Baakari Boyle take viewers back in time to 1935 and through the 1960s.



In Beautiful Relaxing Ephraim
920-854-2734 or Edge-waterResort.com

OPEN YEAR ROUND!

- Private Sandy Beach and Pool
- Waterfront Condo Style Rooms

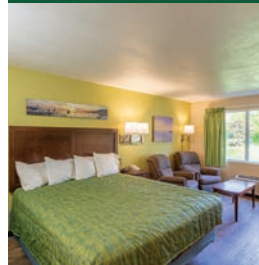


Scan to hear from our host!



10040 N Water Street • Ephraim, WI | Find us on [f](#) [i](#) [y](#) YouTube

Affordable lodge rooms, kitchenettes and suites with fireplaces.



Near Fish Creek dining, galleries, theaters and Peninsula State Park.

920.868.2046 • 800.433.7592 • 3775 Hwy 42, Fish Creek • stay@parkwoodlodge.com

www.ParkwoodLodge.com



24-Hour Emergency Service
At your door, when you need us!

Celebrating
Door County Arts

Fireplaces
Heating & Cooling
HotSpring® Spas

Sturgeon Bay • Sister Bay • Luxemburg 
See our new showroom at wulfbrothers.com



TAVERN | COFFEE | SHOPS

Bayside Tavern, named "Wisconsin's Best Small Town Bar" and home of famous "Smilen" Bob's Chili, great burgers, sandwiches, salads, pizza and fish fry.

Also visit Bayside Coffee, serving breakfast or lunch, and The Bayside Shop located in downtown Fish Creek.

baysidetavern.com | 920.868.3441



Smilen' Bob MacDonald



GEORGIA FRIED

Costume Shop Supervisor

Georgia received her BA in theatre production with a minor focus in sculpture from Salisbury University (Maryland) in 2021. She graduated in 2024 with her MFA in costume and scenic design from Ohio University, where she has worked on multiple productions, including her immersive thesis project, *Shining Girls*. She hopes to one day design and make costumes for burlesque dancers.



KELLYN GAGNER

Assistant Costume Shop Supervisor

Kellyn is excited to return to Peninsula Players Theatre for her fourth season. She studied literature and art at Lawrence University but found her home in the costume shop. Recent credits include costume designer's assistant for the operas *Cendrillon* and *Alice Tierney* at Lawrence University and costume designer for *Ms. Holmes & Ms. Watson—#2B* at Third Avenue PlayWorks. She just finished her third year teaching costume practicum at the University of Wisconsin-Green Bay.



Box Office Hours

Scan the QR code to check our daytime Box Office hours.
Our Box Office is closed on Mondays.
Call (920) 868-3287 or email tickets@peninsulaplayers.com.
The Box Office is open 90 minutes before a show.



Enhance the enjoyment, beauty & care of your landscape & outdoor living spaces...call today!

nursery & garden center open 9 - 4 daily may thru october

natural landscapes for healthy living

consultation • design • landscape installation & renovation • stonework • irrigation planting bed care • mowing • fertilization • weed control • insect control • tree care

920-746-9770 • 6329 hwy 42 egg harbor • doorlandscape.com

WBDC - might have to create

At Quantum Technologies we don't just fix tech problems
We perform IT masterpieces

Act I: A Marquee of Mastery



Our cast of technicians and customer care advisors are the seasoned performers of the IT stage, ready to captivate and solve with skill and grace.

Act II: A Diverse Playbill of Services



Our range of services is as diverse as the Players playbill. We're the set designers of your digital stage, ensuring every scene in your business runs smoothly.

Act III: A Curtain Call for Excellence



Known for our exceptional turnaround times and courteous service, we ensure your IT experience is worthy of a Tony.




Finale: Our Standing Ovation Promise



Our passion for technology is matched only by our love for helping YOU. Honesty, integrity, and quality craftsmanship are the scripts from which we never deviate.

Quantum Technologies is not just an IT company; we're your all-star ensemble, ensuring your technology performs flawlessly. With us, every IT challenge becomes a hit show, leaving you with the peace of mind that comes from a successful run.

Quantum Technologies – Where Every Solution is a Showstopper!

-  ALGOMA
-  STURGEON BAY
-  WASHINGTON ISLAND



quantumtechnologies.com | 920.256.1214



KATHARINE BAUMANN

Box Office Manager

Katharine is thrilled to be returning for their second season at Peninsula Players Theatre! Last season, she served as the assistant box office manager. They recently graduated from Millikin University with a BA in theatre and performance studies, a BS in biology and a music minor. In the off-season, Katharine lives in Chicago and is an overhire carpenter and technician. A recent major project included being a production assistant, carpenter and run crew cover for the musical *Illinoise* at Chicago Shakespeare Theater, which has since transferred to Broadway. They are excited to spend another summer with the Peninsula Players Theatre family and to help patrons have a wonderful experiences!



CALEB PEREZ

Assistant Box Office Manager

Caleb (he/him) is from Chicago and is excited to join Peninsula Players Theatre for his first season. He recently graduated from Purdue University Northwest, earning a BA in communication with a concentration in marketing and a Spanish minor. This past winter, he worked in the box office for Theatre at the Center, where he also assisted in the production of various plays, concerts and comedy acts. During his college years, he worked across the country at various seasonal jobs, so he is thrilled to call Door County his home this summer.



The Box Office emails curtain time reminders 24-hours before the show. If you did not receive a reminder, please contact the Box Office to verify we have your email address.



NORTHERN SKY
THEATER

2024 SEASON

SONGS.

STORIES.

JOY.

JUNE 12 – OCTOBER 26

In the Gould
July 11 – October 26

At the Park
June 12 – August 31

Indoor Gould Theater | Outdoor Park Amphitheater

(920) 854-6117 • NorthernSkyTheater.com

On Deck



JOSHUA WILLIAMS

Audio and Lighting Supervisor

Joshua is delighted to return to the Peninsula Players Theatre family as the audio and lighting supervisor for a second summer. Joshua is a second-year graduate student at the University of Memphis studying sound and lighting design. Previous credits include *The Rocky Horror Show*, *Emerge Dance 360* (University of Memphis), *A Christmas Carol* (Central Florida Community Arts), *Mame* (Forestburgh Playhouse – Catskill Region), and *Sweet Charity* (Oakland University – Auburn Hills and Rochester, Michigan). Joshua has also worked with various performance companies, such as Walt Disney World Resorts, Utah Shakespeare Festival and many others. Joshua is a proud member of IATSE Local 69 and USITT.

HAWKINS | ASH
CPAs

Tax | Audit | Accounting

www.HawkinsAsh.CPA



Be mindful of your personal impact on nature spaces and embrace the overall ethos of "leave it better."

WHEN YOU EXPLORE THE OUTDOORS, KEEP DOOR COUNTY'S LEAVE NO TRACE 7 PRINCIPLES IN MIND:

- Know Before You Go**
Prepare to be amazed but not surprised.
- Stick to the Trails**
Discover something beautiful
- Trash your Trash**
Pack it in, pack it out.
- Leave It As You Found It**
See it all.
- Be Careful With Fire**
Make warm memories.
- Keep Wildlife Wild**
Respect each other-including our wild ones.
- Share Our Trails, Roads and National Resources**
Live for each moment.




INNOVATIVE PRINTING

(920) 854.2662

2414 Unit #1 | Country Walk Dr. | Sister Bay, WI 54234

WWW.INNOVATIVEPRINTINGLLC.COM

PRINTING | GRAPHIC DESIGN



PENINSULA
music festival

SEVENTY SECOND SEASON

Symphony Series

AUGUST 6-24, 2024

Concerts held at 7:30pm | Door Community Auditorium | Fish Creek, WI

920.854.4060 | www.musicfestival.com

Grammy Award Winning **Branford Marsalis** comes to the Peninsula Music Festival on **August 6th!**

Conductor Laureate **Victor Yampolsky** returns to the Peninsula Music Festival on **August 8th!**



Tickets Start at \$35
Students and Children \$10

CARLSON ERICKSON BUILDERS

920-854-2162
carlsonericksonbuilders.com



CRAIG COURSIN
OWNER/PRESIDENT



There's Something for Everyone on Door County's Pioneer Stations

WDOR - 910 AM and WDOR-FM - 93.9 FM

STURGEON BAY

STURGEON BAY

"All radio stations are not the same"

"Your Door County Radio Station Since 1951"

Northern Door County's *Locally-Owned* Neighborhood Grocer

Full Deli & Catering • Certified Angus Beef

Fresh & Local Produce • In-Store Bakery & Custom Cakes

Full Liquor, Wine & Beer Sections • Catering



piggly wiggly

10576 Country Walk Drive

(in the Country Walk Shops)

Top of the hill in Sister Bay • 920.854.2391

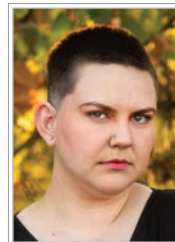
Open Daily at 7 am



BECCA STOCKHAUS

Assistant Technical Director

Becca has a Bachelor of Fine Arts in technical theater from the University of Minnesota Duluth. When not in Door County, she works in Knoxville, Tennessee, as an overhire scenic and props carpenter at the Clarence Brown Theatre. This is her fifth season at Peninsula Players Theatre after starting as a production intern in 2019.



BONNIE RUBLE

Assistant Prop Shop Supervisor

Bonnie is a freelance stage manager, props designer and painter. They got their BA in technical theater from the University of Northern Iowa in 2020. Until this summer, they were the production manager, props master and paint charge of the Waterloo Community Playhouse in Waterloo, Iowa. In the fall, they will attend the University of Iowa to get their MFA in stage management. They are excited to spend the summer at Peninsula Players Theatre as the assistant prop shop supervisor.



? CARPENTER 2

?

?

IN THE KANE THEATRE IN HISTORIC DOWNTOWN STURGEON BAY

Theatre Worth Talking About

THIRD AVENUE PLAYWORKS

THIRDAVENUEPLAYWORKS.ORG • 920.743.1760





**WISCONSIN
PUBLIC RADIO**

Wisconsin Today

Get the latest news and insights from around the state with Rob Ferrett and Kate Archer Kent on "Wisconsin Today."

9 a.m. weekdays and anytime at wpr.org

89.7
WPR News
Sister Bay

89.3
WPR News
Green Bay

npr Network



MICHAEL MITCHELL

Carpenter

Michael is a Maryland native and the scenic studio specialist for Salisbury University's Department of Music, Theatre and Dance. Michael has worked in theater since the third grade after his parents suggested he join drama club because he was "dramatic." He returns for his second season at Peninsula Players Theatre and is excited to continue developing his skills as a part of this team. When not building sets, Michael can be found performing with Fultontown Theatre Company, Salisbury University's resident

theater company.

Habitat for Humanity | ReStore

OPEN TO THE PUBLIC
MONDAY - FRIDAY 9 - 5,
SATURDAY 9 - 2

DONATE, SHOP, VOLUNTEER!

410 N. 14th Ave
Sturgeon Bay, WI 54235
920-743-2869



Shallows

REINHARD PLUMBING INC.
FOR ALL YOUR PLUMBING NEEDS!

- All Interior Plumbing - New or Remodeling
- In Stock Toilets, Sinks, Faucets, Water Heaters, etc.
- Turn On & Draining of Homes
- Complete Well Pump Service
- In-Stock Pumps & Pressure Tanks
- Water Softeners - Sales & Service
- Septic Systems Design & Installation
- Well Inspections
- Septic Evaluations
- Sewer Jetting
- Drain Cleaning
- Water Testing

QUICK, RELIABLE SERVICE SINCE 1960
3279 County Rd F • Fish Creek
Phone 920-839-2148 Fax: 920-839-9252
Email: reinhardoffice@gmail.com

MP224201 **MP222303**

The English Inn

3713 Wisconsin 42,
Fish Creek, WI 54212
Tel: 920.868.3076

DINNER: 7 DAYS A WEEK
STARTING AT 4 PM

Dine-in or join us on the patio




Are you interested in
The Play's the Thing,
our winter play reading series?



Scan to sign-up for email notices.
We look forward to seeing you
at Björklunden in 2025!

*Free Admission
General Seating
Donations Accepted*

f
fine line designs
GALLERY & SCULPTURE GARDEN



A UNIQUE GALLERY... A DISTINCTIVE DESTINATION

Open Daily at 10 am · May – October · Limited Winter Weekends
10376 Hwy 42 at Ephraim's north end · 920-854-4343

finelinedesignsgallery.com




**PENINSULA
SCHOOL OF ART
& GALLERY**





A haven for art learners, makers, and appreciators
on the Door County peninsula.

Fine Art Workshops | Exhibitions
Door County Plein Air Festival | Family Art Days

PeninsulaSchoolofArt.org Fish Creek, WI 920.868.3455



*The
Ashbrooke Hotel*

7942 Egg Harbor Road ♦ Egg Harbor, WI 54209 ♦ 877.868.3113 ♦ www.ashbrooke.net



Baileys Harbor Yacht Club Resort



Moments form the
Best of Door County, providing
memories for a lifetime.

www.bhycr.com
1-800-927-2492

DOOR COUNTY'S ICONIC RESORT & GOLF



ALPINE

RESORT



Situated on the pristine shores of Egg Harbor, the Alpine Resort offers championship golf, exceptional dining, outdoor recreation, and live entertainment. Stay in our newly renovated cottages and discover the best of Door County. Book your stay to relax at the Alpine - you've earned it.
www.alpineresort.com

Ask us about our stay, play and dine vacation packages: Call 920.868.3000



7715 Alpine Road, Egg Harbor, WI 54209
alpineresort.com | 920.868.3000



THE FANTABULOUS
shopping experience that
is not to be missed
Accents for your life
and home!

58 N 3rd Ave, Sturgeon Bay
(920) 743-6722
blissdoorcounty.com
Like us on : facebook.com/DoorCountyBliss



Every great writer was once unknown.

**Find your inspiration at Write On,
Door County.**

Take part in any of our variety of classes and workshops or just stop in, pick a spot, and start your book, poem, personal memoir, or even a script. Or simply wander our Writer's Walk — 59 acres of hiking trails — and see what you discover.



**Find classes, workshops,
and events for all ages online.**

writeondoorcounty.org | 920.868.1457
4210 Juddville Road, Fish Creek



Write On,
Door County

fm **106.9** the **Lodge**

And  **REWIND 97.7**



By tuning in to the World Class Rock, you're supporting the arts in this World Class County!

In high school, the tunes you grooved to are now Classic Hits. Tune in to Rewind 97.7 for amazing variety!



Go beyond the analog; enjoy tunes even when you're away.

fm1069thelodge.com
rewind977.com

Download our Apps!

Ephraim - Sturgeon Bay - Worldwide

Bjorkklunden

WHOLE HOME *design solutions*




SCHEDULE A DESIGN CONSULTATION TODAY

920-868-9008

DOORCOUNTYINTERIORS.COM

- FURNITURE
- FLOORING
- LIGHTING
- WINDOW TREATMENTS
- CABINETS
- TILE & BACKSPLASH
- SPACE PLANNING
- KITCHEN & BATH REMODELS
- PROJECT MANAGEMENT

SEE OUR PROJECTS 

7266 STATE HWY 42 - 2 MILES SOUTH OF EGG HARBOR | SHOWROOM & DESIGN CENTER OPEN YEAR ROUND



Not Just a Concert ... It's an Experience!

MIDSUMMER'S MUSIC



Season 34 • June 13 - September 2

Tickets and details: midsummersmusic.com or 920-854-7088

Thousands
of hats in
store ...



HAT HEAD



Changing Hattitudes for 25 Years!

4075 Main St | Fish Creek, WI
920.868.2371

plus, custom embroidery!

Door Shakespeare

AMERICAN PLAYERS

Sunnypoint Gardens®

A Favorite Door County
Destination for Gardeners

- Annuals • Perennials
- Herbs • Vegetables
- Roses • Shrubs • Hydrangeas
- Pottery • Statuary • Garden Decor
- Gardening Supplies
- Soil, Mulch & Amendments



6939 State Hwy. 42 • 3 miles south of Egg Harbor
Open Daily • SunnypointDoorCounty.com

Thank You, Volunteers!

Thank you to our amazing volunteer ushers and the Pete Schuster Memorial Broom Squad for all of your hard work and dedication!



Interested in volunteering?

Phone the Box Office for ushering availability at (920) 868-3287 or scan and sign up for information on future volunteer opportunities.





Please Support Our Advertisers

Peninsula Players Theatre extends its deepest gratitude to our steadfast community for their unwavering generosity. We encourage our patrons to embrace these businesses and contributors who stand as pillars of support for us. Next time you visit their establishments, please convey your appreciation for their invaluable contribution to making Door County a vibrant arts community.



RUMMELE'S
JEWELERS
www.rummeles.com

234 SOUTH ADAMS ST.	9405 WI-42
GREEN BAY, WI 54301	FISH CREEK, WI 54212
920.432.0664	920.868.2121
OPEN YEAR-ROUND	SEASONAL MAY-OCT

Alexander's of Door County.....	Page 36	Door County Maritime Museum.....	Page 26
Alpenhaus, LLC.....	Page 37	Door County Medical Center.....	Page 13
Alpine Resort.....	Page 94	Door County Nature Works.....	Page 41
American Players Theater.....	Page 99	Door County YMCA.....	Page 23
Anschutz Plumbing & Heating, Inc.....	Page 21	Door Landscape & Nursery.....	Page 83
The Ashbrooke Hotel.....	Page 92	Door Shakespeare.....	Page 98
Bacon CPA, LLC.....	Page 17	Drömhus Door County.....	Page 28
Baileys Harbor Yacht Club Resort.....	Page 92	Eagle Harbor Inn.....	Page 36
Bay Breeze Resort.....	Page 15	Edgewater Resort.....	Page 81
Bayside Tavern.....	Page 82	Edgewood Orchard Gallery.....	Inside front cover
Birch Creek.....	Page 85	The English Inn.....	Page 92
Björklunden / Lawrence University.....	Page 97	Ephraim Business Council.....	Page 24
Bliss.....	Page 95	Ephraim Shores Resort.....	Page 17
The Boldt Company.....	Page 11	ERA Starr Realty.....	Page 80
Blue Bear Restaurant.....	Page 38	Events USA/Packer Land Tours.....	Page 36
Carlson Erickson Builders.....	Page 88	Fine Line Designs Gallery.....	Page 93
Carrington Pub the Landmark.....	Page 26	Glidden Lodge.....	Page 31
Chanticleer Cabins.....	Page 41	Green Bay Austin Straubel International Airport.....	Inside back cover
Chanticleer Guest House.....	Page 24	Green Lake Festival of Music.....	Page 25
Clay Bay Pottery.....	Page 17	Habitat for Humanity - Door County.....	Page 91
The Clearing.....	Page 31	Harbor Guest House.....	Page 12
Cornucopia Kitchen Corner.....	Page 21	Hat Head.....	Page 98
County House Resort.....	Page 19	Hawkins Ash CPAs, LLP.....	Page 87
Coyote Roadhouse.....	Page 16	Hide Side Corner Store & Hide Side Boutique.....	Page 21
Daydreams Properties.....	Page 28	Homestead Suites.....	Page 20
Dentistry by Design.....	Page 32	Island Orchard Cider.....	Back cover
Destination Door County.....	Page 18	Innovative Printing.....	Page 87
Door Community Auditorium.....	Page 0	JR Vacation Rentals.....	Page 39
Door County Hardware (Ace Hardware).....	Page 37	Kind Soul Yoga.....	Page 25
Door County Board of Realtors.....	Page 23	Kwik Trip, Inc.....	Page 32
Door County Coffee.....	Page 24	The Log Den.....	Page 17
Door County Eye Associates.....	Page 25	Main Street Market.....	Page 15
Door County Interiors & Design.....	Page 97		
Door County Land Trust.....	Page 14		

Midsommar Apothecary.....	Page 41	The Shallows Resort	Page 91
Midsummer Music Festival	Page 97	Silver Poplar Studios, LLC.....	Page 31
Neverland+Co	Page 27	Sister Bay Bowl	Page 20
Nicolet National Bank	Page 14	Staudenmaier Chiropractic.....	Page 20
Nightingale Supper Club.....	Page 19	Stonehedge Golf Course.....	Page 30
Northern Sky Theater	Page 86	Sunnypoint Gardens.....	Page 99
On Deck Clothing Co.....	Page 86	Third Avenue PlayWorks	Page 89
Open Door Pride.....	Page 25	True North Real Estate.....	Page 16
Parkwood Lodge.....	Page 81	Vanden Heuvel & Dineen, S.C	Page 40
Peninsula Music Festival	Page 87	Washington Island Ferry Line	Page 19
Peninsula School of Art	Page 92	WBDK - 96.7 FM	Page 83
Peninsula Publishing and Distribution	Page 22	WDOR - 93.9 FM & 910 AM	Page 88
Piggly Wiggly	Page 88	WLGE FM 106.9, The Lodge.....	Page 96
Pinkert Law Firm, LLP	Page 80	White Gull Inn.....	Page 15
Portside Builders	Page 32	Wilson's Restaurant.....	Page 39
Quantum Technologies.....	Page 84	Wisconsin Public Radio	Page 90
RBC Wealth Management.....	Back cover	Write On, Door County	Page 95
Reinhard Plumbing, Inc	Page 91	Wulf Bros Energy & Heating.....	Page 82
Rummele's Jewelers	Page 110	Young Automotive, Inc.....	Page 80
Security Fence & Supply	Page 25		
Settlement Courtyard Inn Lavender Spa.....	Page 30		

DC Auditorium

Celebrate any occasion!



Give the Peninsula
Players Experience!

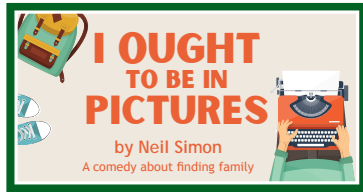
www.peninsulaplayers.com

GIFT CERTIFICATES MAKE GREAT GIFTS



OUR 2024 SEASON

June 18 – July 7



I OUGHT TO BE IN PICTURES

A comedy about finding family. Burned-out Hollywood screenwriter Herb Tucker's life is turned upside down when his girlfriend, Steffy, opens the door to discover an unexpected visitor. Libby, the 19-year-old daughter Herb hasn't seen since she was three, has hitchhiked across the country hoping her estranged father will help fulfill her dreams of being in pictures. Although connection doesn't come easily, perhaps this shakeup could provide a second chance for all of them. This spirited comedy is full of the trademark wit, humor and heart of Neil Simon, one of the American theater's most beloved playwrights.

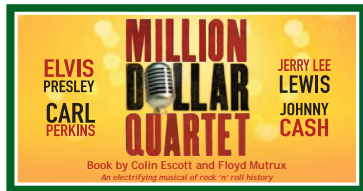
July 10 – July 28



THE ANGEL NEXT DOOR

A non-stop rollercoaster of laughs. Adapted from Ferenc Molnár's *Play at the Castle* by the creator of *Unnecessary Farc*e and *A Real Lulu* (now titled *The Outsider*). A Newport mansion in 1948 is populated with playwrights, actors, a young starstruck writer and the housekeeper who would like them all to leave. When an unexpected incident threatens to ruin the show they are creating, everyone must act fast to save the day. Comic chaos ensues and ensnares all in its wake. Sometimes, even reality needs a rewrite to find a happy ending.

June 18 – July 7



MILLION DOLLAR QUARTET

An electrifying musical of rock 'n' roll history. Join legendary producer Sam Phillips at Sun Records studios on December 4, 1956, when an extraordinary twist of fate brought four young artists on the cusp of becoming superstars together for the most incredible jam session in music history. *Million Dollar Quartet* is an irresistible tale of broken promises, secrets and celebrations that is both poignant and funny. These four legends bring down the house with hits including "Blue Suede Shoes," "Great Balls of Fire," "Hound Dog" and "I Walk the Line."

June 18 – July 7



MARY'S WEDDING

An unforgettable and haunting love story. On the night before her wedding, Mary dreams back to the thunderstorm during which she encounters a handsome, young farm boy sheltering in a barn. Mary and Charlie soon discover the profound power of first love. But it is 1914, and the Canadian Calvary calls for steadfast and brave men. Although the lovers must part, they stay connected through their letters and their dreams, searching for a place where the uncertainties of battle and the costs of war can't find them. *Mary's Wedding* is a beautifully poetic story of the resilience love can bring.

June 18 – July 7



THE STRANGER

An intimate psychological thriller. Enid questions her seven-year engagement and is looking for a bit of spark in her lackluster life. Enter Gerald Strange, a handsome and charming gentleman who shares her longing for adventure and may be the man to sweep her off her feet. Is Gerald the answer to her wishes or a path to disaster? This recently discovered work is Agatha Christie's own adaptation of her short story "Philomel Cottage." The queen of mystery reminds us that not everyone is who they seem.

June 18 – August 31: Tuesday – Saturday at 8:00 p.m.; Sundays at 7:30 p.m.*

September 4 – October 19: Tuesday – Sunday at 7:00 p.m.*

*Except Sundays July 7, July 28, August 18, September 1 and October 20 at 2:00 p.m.

Order tickets online: www.PeninsulaPlayers.com

Where
adventure
Begins

GREEN BAY
AUSTIN
STRAUBEL
INTERNATIONAL AIRPORT
GRB

business
leisure
between

flyGRB.com



ISLAND ORCHARD CIDER



OPEN
ALL YEAR



CIDER TAPROOM BOTTLE SHOP

DOOR COUNTY CIDER HOUSE

12040 GARRETT BAY ROAD, ELLISON BAY | 920-854-3344 | ISLANDORCHARDCIDER.COM

Behind every performance is a strategy for success

At RBC Wealth Management, we assemble the right players and take a strategic approach to helping you meet your financial goals.

Call today for a complimentary consultation.



Door County Branch

(920) 743-7575

756 Jefferson Street
Sturgeon Bay, WI 54235

[us.rbcwm.com/
doorcounty](http://us.rbcwm.com/doorcounty)



**Wealth
Management**
Door County

Investment and insurance products: • Not insured by the FDIC or any other federal government agency • Not a deposit of, or guaranteed by, the bank or an affiliate of the bank • May lose value

© 2024 RBC Wealth Management, a division of RBC Capital Markets, LLC, registered investment adviser and Member NYSE/FINRA/SIPC. 24-SB-00854 (03/24)